

Erlin-2 Rabbit mAb

货号: **AYM30799**

产品信息

反应	Human,Mouse
宿主	Rabbit
克隆性	Monoclonal
预测反应	
应用	WB IHC IF/ICC
推荐浓度	WB: 1:500 - 1:2000 IHC: 1:50 - 1:200 IF/ICC: 1:50 - 1:200
理论分子量	38kDa
实测分子量	38kDa
形式	Liquid
保存条件	Store at -20°C. Avoid freeze / thaw cycles. Buffer: PBS with 0.75% BSA,50% glycerol,pH7.3.
偶联物	Unconjugated
阳性对照	293T,PC-3,OVCAR3,C2C12
细胞定位	Endoplasmic reticulum membrane,Single-pass type II membrane protein
纯化	Affinity purification

抗原信息

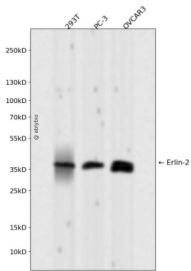
抗原信息	Recombinant fusion protein corresponding to Human Erlin-2.
序列	HLMLPFITSYKSVQTTLQTDEVKNVPCGTSGGVMIYFDRIEVNFLVNAVYDIVKNYTADYDKALIFNKIHHELNQFCSVHTLQEVYIELFDQIDENLKL

靶点信息

研究背景	This gene encodes a member of the SPFH domain-containing family of lipid raft-associated proteins. The encoded protein is localized to lipid rafts of the endoplasmic reticulum and plays a critical role in inositol 1,4,5-trisphosphate (IP3) signaling by mediating ER-associated degradation of activated IP3 receptors. Mutations in this gene are a cause of spastic paraplegia-18 (SPG18). Alternatively spliced transcript variants encoding multiple isoforms have been observed for this gene.
------	--

基因ID	11160
基因名	ERLIN2
Swiss	O94905
别名	ERLIN2; C8orf2; Erlin-2; NET32; SPFH2; SPG18; erlin-2

产品验证



Western blot analysis of Erlin-2 expressed in 293T, PC-3, OVCAR3 using Erlin-2 Rabbit mAb at 1:1000. Secondary antibody: HRP Goat Anti-Rabbit IgG (H+L) at 1:5000. Lysates/proteins: 30ug per lane. Blocking buffer: 5% non-fat dry milk in TBST. Detection: ECL Enhanced Kit. Exposure time: 120s.

实验步骤

访问官网浏览详情: www.ablybio.cn