

# Cyclin E2 Rabbit mAb

货号: **AYM30795**

## 产品信息

反应	Human,Mouse
宿主	Rabbit
克隆性	Monoclonal
预测反应	
应用	WB IHC IF/ICC FC
推荐浓度	<b>WB:</b> 1:500 - 1:2000 <b>IHC:</b> 1:50 - 1:200 <b>IF/ICC:</b> 1:50 - 1:200 <b>FC:</b> 1:20 - 1:50
理论分子量	41kDa/46kDa
实测分子量	47kDa
形式	Liquid
保存条件	Store at -20°C. Avoid freeze / thaw cycles. Buffer: PBS with 0.75% BSA,50% glycerol,pH7.3.
偶联物	Unconjugated
阳性对照	Jurkat
细胞定位	Nucleus
纯化	Affinity purification

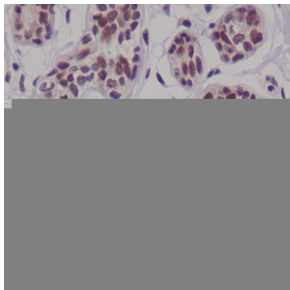
## 抗原信息

抗原信息	Recombinant fusion protein corresponding to Human Cyclin E2.
序列	ALKDAPKVLPPQYSQETFIQIAQLLDLCLIAIDSLEFQYRILTAALCHFTSIEVVKKASGLEWDSISECVDWMMVPFVNVVKSTSPVKLKTFFKIPMEDRHNIQTHTNYLAMLEEVNYINTFRKGGQLSPVCNGGIMTPPKSTEKPPGKH

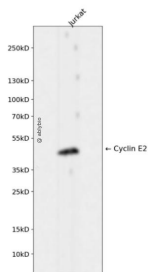
## 靶点信息

研究背景	The protein encoded by this gene belongs to the highly conserved cyclin family, whose members are characterized by a dramatic periodicity in protein abundance through the cell cycle. Cyclins function as regulators of CDK kinases. Different cyclins exhibit distinct expression and degradation patterns which contribute to the temporal coordination of each mitotic event. This cyclin forms a complex with and functions as a regulatory subunit of CDK2. This cyclin has been shown to specifically interact with CIP/KIP family of CDK inhibitors, and plays a role in cell cycle G1/S transition. The expression of this gene peaks at the G1-S phase and exhibits a pattern of tissue specificity distinct from that of cyclin E1. A significantly increased expression level of this gene was observed in tumor-derived cells.
基因ID	9134
基因名	CCNE2
Swiss	O96020
别名	CCNE2;CYCE2;cyclin E2

## 产品验证



Immunohistochemical analysis of paraffin-embedded human breast carcinoma, using Cyclin E2 Antibody.



Western blot analysis of Cyclin E2 expressed in Jurkat using Cyclin E2 Rabbit mAb at 1:1000. Secondary antibody: HRP Goat Anti-Rabbit IgG (H+L) at 1:5000. Lysates/proteins: 30ug per lane. Blocking buffer: 5% non-fat dry milk in TBST. Detection: ECL Enhanced Kit. Exposure time: 120s.

## 实验步骤

访问官网浏览详情: [www.ablybio.cn](http://www.ablybio.cn)