

CDK5 Rabbit mAb

货号: **AYM30793**

产品信息

反应	Human,Mouse,Rat
宿主	Rabbit
克隆性	Monoclonal
预测反应	
应用	WB IHC IP FC
推荐浓度	WB: 1:500 - 1:2000 IHC: 1:50 - 1:200 IP: 1:20 - 1:50 FC: 1:20 - 1:50
理论分子量	29kDa/33kDa
实测分子量	33kDa
形式	Liquid
保存条件	Store at -20°C. Avoid freeze / thaw cycles. Buffer: PBS with 0.75% BSA,50% glycerol,pH7.3.
偶联物	Unconjugated
阳性对照	293T,HepG2,BT-474,A-549,PC-12,Mouse brain,Rat brain
细胞定位	Cell junction,Cell membrane,Cell projection,Cytoplasm,Nucleus,Perikaryon,Peripheral membrane protein, growth cone,lamellipodium,postsynaptic cell membrane,postsynaptic density,synapse
纯化	Affinity purification

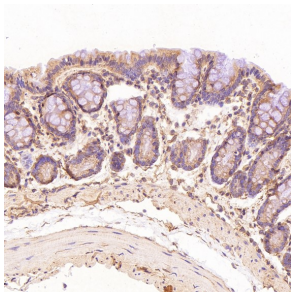
抗原信息

抗原信息	Recombinant fusion protein corresponding to Human CDK5 .
序列	PDVLFGAKLYSTSIDMWSAGCIFAELANAGRPLFPGNDVDDQLKRIFRLLGTPTEEQWPSMTKLPDYKPYPMYPATTSLVN VVPKLNATGRDLLQNLLKCNPVQRISAEELQHPYFSDF

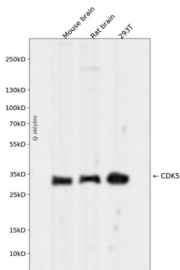
靶点信息

研究背景	This gene encodes a proline-directed serine/threonine kinase that is a member of the cyclin-dependent kinase family of proteins. Unlike other members of the family, the protein encoded by this gene does not directly control cell cycle regulation. Instead the protein, which is predominantly expressed at high levels in mammalian postmitotic central nervous system neurons, functions in diverse processes such as synaptic plasticity and neuronal migration through phosphorylation of proteins required for cytoskeletal organization, endocytosis and exocytosis, and apoptosis. In humans, an allelic variant of the gene that results in undetectable levels of the protein has been associated with lethal autosomal recessive lissencephaly-7. Alternative splicing results in multiple transcript variants.
基因ID	1020
基因名	CDK5
Swiss	Q00535
别名	CDK5; LIS7; PSSALRE

产品验证



Immunohistochemical analysis of paraffin-embedded Rat stomach, using the Antibody at 1:200 dilution.



Western blot analysis of CDK5 expressed in Mouse brain, Rat brain, 293T using CDK5 Rabbit mAb at 1:1000. Secondary antibody: HRP Goat Anti-Rabbit IgG (H+L) at 1:5000. Lysates/proteins: 30ug per lane. Blocking buffer: 5% non-fat dry milk in TBST. Detection: ECL Enhanced Kit. Exposure time: 120s.

实验步骤

访问官网浏览详情: www.ablybio.cn