

ALDH16A1 Rabbit mAb

货号: **AYM30792**

产品信息

反应	Human,Mouse,Rat
宿主	Rabbit
克隆性	Monoclonal
预测反应	
应用	WB IHC
推荐浓度	WB: 1:500 - 1:2000 IHC: 1:50 - 1:200
理论分子量	80kDa
实测分子量	80kDa
形式	Liquid
保存条件	Store at -20°C. Avoid freeze / thaw cycles. Buffer: PBS with 0.75% BSA,50% glycerol,pH7.3.
偶联物	Unconjugated
阳性对照	HepG2,RD,K-562,Mouse large intestine,Mouse liver,Mouse kidney,Rat liver
细胞定位	
纯化	Affinity purification

抗原信息

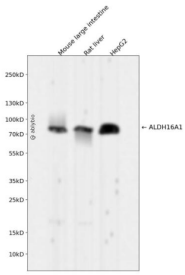
抗原信息	Recombinant fusion protein corresponding to Human ALDH16A1.
序列	NLNYDTFGLAVPSTLPAGPEIGPSPAPPYGLFVGGRFQAPGARSSRPIRDSSGNLHGYVAEGGAKDIRGAVEAAHQAFPG WAGQSPGARAALLWALAAALE

靶点信息

研究背景	This gene encodes a member of the aldehyde dehydrogenase superfamily. The family members act on aldehyde substrates and use nicotinamide adenine dinucleotide phosphate (NADP) as a cofactor. This gene is conserved in chimpanzee, dog, cow, mouse, rat, and zebrafish. The protein encoded by this gene interacts with maspardin, a protein that when truncated is responsible for Mast syndrome. Alternatively spliced transcript variants encoding different isoforms have been found for this gene. [provided by RefSeq, Apr 2010]
------	---

基因ID	126133
基因名	ALDH16A1
Swiss	Q8IZ83
别名	

产品验证



Western blot analysis of ALDH16A1 expressed in Mouse large intestine, Rat liver, HepG2 using ALDH16A1 Rabbit mAb at 1:1000. Secondary antibody: HRP Goat Anti-Rabbit IgG (H+L) at 1:5000. Lysates/proteins: 30ug per lane. Blocking buffer: 5% non-fat dry milk in TBST. Detection: ECL Enhanced Kit. Exposure time: 120s.

实验步骤

访问官网浏览详情: www.ablybio.cn