

ALS2CR1 Rabbit mAb

货号: **AYM30791**

产品信息

反应	Human
宿主	Rabbit
克隆性	Monoclonal
预测反应	
应用	WB IF/ICC
推荐浓度	WB: 1:500 - 1:2000 IF/ICC: 1:50 - 1:200
理论分子量	38kDa
实测分子量	38kDa
形式	Liquid
保存条件	Store at -20°C. Avoid freeze / thaw cycles. Buffer: PBS with 0.75% BSA,50% glycerol,pH7.3.
偶联物	Unconjugated
阳性对照	HepG2,DU145,A-431,Rat testis
细胞定位	Cytoplasm,Nucleus
纯化	Affinity purification

抗原信息

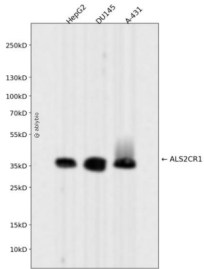
抗原信息	Recombinant fusion protein corresponding to Human ALS2CR1.
序列	MGRLLCTLDESVS LATMIDRIKRHLKLSHIRLALGVGRTLESQVKVVALCAGSGSSVLQGV EADLYLTGEMSHHDTLDAAS QGINVILCEHSNTERGFLSDL

靶点信息

研究背景	May function as a transcriptional corepressor through its interaction with COPS2, negatively regulating the expression of genes involved in neuronal differentiation.
基因ID	60491
基因名	NIF3L1

Swiss	Q9GZT8
别名	NIF3L1; ALS2CR1; CALS-7; MDS015; NIF3-like protein 1

产品验证



Western blot analysis of ALS2CR1 expressed in HepG2,DU145,A-431 using ALS2CR1 Rabbit mAb at 1:1000. Secondary antibody: HRP Goat Anti-Rabbit IgG (H+L) at 1:5000. Lysates/proteins: 30ug per lane. Blocking buffer: 5% non-fat dry milk in TBST. Detection: ECL Enhanced Kit. Exposure time: 120s.

实验步骤

访问官网浏览详情: www.ablybio.cn