

IRF1 Rabbit mAb

货号: **AYM30788**

产品信息

反应	Human,Mouse,Rat
宿主	Rabbit
克隆性	Monoclonal
预测反应	
应用	WB IHC IF/ICC IP FC
推荐浓度	WB: 1:500 - 1:2000 IHC: 1:50 - 1:200 IF/ICC: 1:50 - 1:200 IP: 1:20 - 1:50 FC: 1:20 - 1:50
理论分子量	36kDa
实测分子量	48kDa
形式	Liquid
保存条件	Store at -20°C. Avoid freeze / thaw cycles. Buffer: PBS with 0.75% BSA,50% glycerol,pH7.3.
偶联物	Unconjugated
阳性对照	Rat spleen,C2C12
细胞定位	Cytoplasm,Nucleus
纯化	Affinity purification

抗原信息

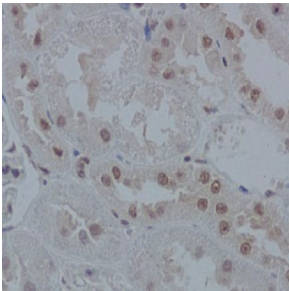
抗原信息	Recombinant fusion protein corresponding to Human IRF1.
序列	NVDGKGYLLNEPGVQPTSVYGD FSCKEEPEIDSPGGDIGLSLQRVFTDLKNMDATWLD SLLTPVRLPSIQAI PCAP

靶点信息

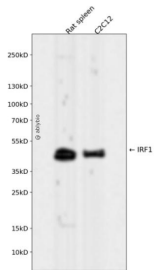
研究背景	IRF1 encodes interferon regulatory factor 1, a member of the interferon regulatory transcription factor (IRF) family. IRF1 serves as an activator of interferons alpha and beta transcription, and in mouse it has been shown to be required for double-stranded RNA induction of these genes. IRF1 also functions as a transcription activator of genes induced by interferons alpha, beta, and gamma. Further, IRF1 has been shown to play roles in regulating apoptosis and tumor-suppression.
------	---

基因ID	3659
基因名	IRF1
Swiss	P10914
别名	IRF1;IRF-1;MAR

产品验证



Immunohistochemical analysis of paraffin-embedded rat kidney, using IRF1 Antibody.



Western blot analysis of IRF1 expressed in Rat spleen, C2C12 using IRF1 Rabbit mAb at 1:1000. Secondary antibody: HRP Goat Anti-Rabbit IgG (H+L) at 1:5000. Lysates/proteins: 30ug per lane. Blocking buffer: 5% non-fat dry milk in TBST. Detection: ECL Enhanced Kit. Exposure time: 1 20s.

实验步骤

访问官网浏览详情: www.ablybio.cn