

MMP2 Rabbit mAb

货号: **AYM30785**

产品信息

反应	Human,Mouse,Rat
宿主	Rabbit
克隆性	Monoclonal
预测反应	
应用	WB IHC
推荐浓度	WB: 1:500 - 1:2000 IHC: 1:50 - 1:200
理论分子量	65kDa/68kDa/73kDa
实测分子量	72kDa
形式	Liquid
保存条件	Store at -20°C. Avoid freeze / thaw cycles. Buffer: PBS with 0.75% BSA,50% glycerol,pH7.3.
偶联物	Unconjugated
阳性对照	C2C12,293T
细胞定位	Cytoplasm,Membrane,Mitochondrion,Nucleus,Secreted,extracellular matrix,extracellular space
纯化	Affinity purification

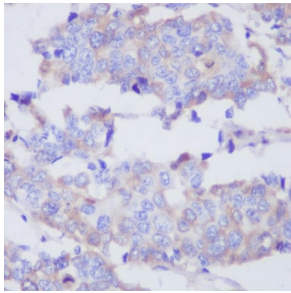
抗原信息

抗原信息	Recombinant fusion protein corresponding to Human MMP2.
序列	IDLGTGPTPTLGPVTP EICKQDIVFDGIAQIRGEIFFFKDRFIWRTVTTPRDKPMGPLLVATFWPELPEKIDAVYEAPQEEKAVF FAGNEYWIYSASTLRLGYPKPLTSLGLPPDVQRVDAAFNWSKNKTTYIFAGDKFWRYNEVKKKMDPGFPKLIADAWNAIP DNLDAVVLDLQGGGHSYFFKGAYYLLKLENQSLKSVKFGSIKSDLGCG

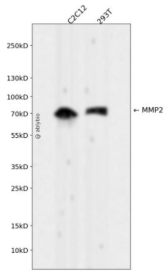
靶点信息

研究背景	This gene is a member of the matrix metalloproteinase (MMP) gene family, that are zinc-dependent enzymes capable of cleaving components of the extracellular matrix and molecules involved in signal transduction. The protein encoded by this gene is a gelatinase A, type IV collagenase, that contains three fibronectin type II repeats in its catalytic site that allow binding of denatured type IV and V collagen and elastin. Unlike most MMP family members, activation of this protein can occur on the cell membrane. This enzyme can be activated extracellularly by proteases, or, intracellularly by its S-glutathiolation with no requirement for proteolytical removal of the pro-domain. This protein is thought to be involved in multiple pathways including roles in the nervous system, endometrial menstrual breakdown, regulation of vascularization, and metastasis. Mutations in this gene have been associated with Winchester syndrome and Nodulosis-Arthropathy-Osteolysis (NAO) syndrome. Alternative splicing results in multiple transcript variants encoding different isoforms.
基因ID	4313
基因名	MMP2
Swiss	P08253
别名	CLG4;CLG4A;MMP-2;MMP-II;MONA;TBE-1;MMP2

产品验证



Immunohistochemical analysis of paraffin-embedded human breast adenocarcinoma, using MMP2 Antibody.



Western blot analysis of MMP2 expressed in C2C12,293T using MMP2 Rabbit mAb at 1:1000. Secondary antibody: HRP Goat Anti-Rabbit IgG (H+L) at 1:5000. Lysates/proteins: 30ug per lane. Blocking buffer: 5% non-fat dry milk in TBST. Detection: ECL Enhanced Kit. Exposure time: 120s

实验步骤

访问官网浏览详情: www.ablybio.cn