

# MEK1/2 Rabbit mAb

货号: **AYM30778**

## 产品信息

反应	Human,Mouse,Rat
宿主	Rabbit
克隆性	Monoclonal
预测反应	
应用	WB IHC IF/ICC IP
推荐浓度	<b>WB:</b> 1:500 - 1:2000 <b>IHC:</b> 1:50 - 1:200 <b>IF/ICC:</b> 1:50 - 1:200 <b>IP:</b> 1:20 - 1:50
理论分子量	40kDa/43kDa/44kDa
实测分子量	44kDa
形式	Liquid
保存条件	Store at -20°C. Avoid freeze / thaw cycles. Buffer: PBS with 0.75% BSA,50% glycerol,pH7.3.
偶联物	Unconjugated
阳性对照	HeLa,NIH/3T3
细胞定位	cytosol,early endosome,endoplasmic reticulum,focal adhesion,Golgi apparatus,late endosome,microtubule organizing center,mitochondrion,nucleus,plasma membrane
纯化	Affinity purification

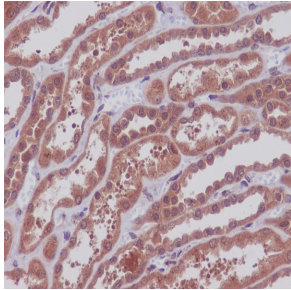
## 抗原信息

抗原信息	Recombinant fusion protein corresponding to Human MEK1/2.
序列	SMANS

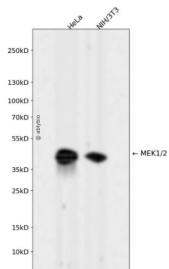
## 靶点信息

研究背景	The protein encoded by this gene is a member of the dual specificity protein kinase family, which acts as a mitogen-activated protein (MAP) kinase kinase. MAP kinases, also known as extracellular signal-regulated kinases (ERKs), act as an integration point for multiple biochemical signals. This protein kinase lies upstream of MAP kinases and stimulates the enzymatic activity of MAP kinases upon wide variety of extra- and intracellular signals. As an essential component of MAP kinase signal transduction pathway, this kinase is involved in many cellular processes such as proliferation, differentiation, transcription regulation and development. [provided by RefSeq, Jul 2008]
基因ID	5604,5605
基因名	MAP2K1,MAP2K2
Swiss	Q02750/P36507
别名	MEK1/MEK2

## 产品验证



Immunohistochemical analysis of paraffin-embedded human kidney, using MEK1/2 Antibody.



Western blot analysis of MEK1/2 expressed in HeLa,NIH/3T3 using MEK1/2 Rabbit mAb at 1:1000. Secondary antibody: HRP Goat Anti-Rabbit IgG (H+L) at 1:5000. Lysates/proteins: 30ug per lane. Blocking buffer: 5% non-fat dry milk in TBST. Detection: ECL Enhanced Kit. Exposure time: 120s.

## 实验步骤

访问官网浏览详情: [www.ablybio.cn](http://www.ablybio.cn)