

# KLF10 Rabbit mAb

货号: **AYM30777**

## 产品信息

反应	Human,Mouse,Rat
宿主	Rabbit
克隆性	Monoclonal
预测反应	
应用	WB
推荐浓度	<b>WB:</b> 1:500 - 1:2000
理论分子量	53kDa
实测分子量	53kDa
形式	Liquid
保存条件	Store at -20°C. Avoid freeze / thaw cycles. Buffer: PBS with 0.75% BSA,50% glycerol,pH7.3.
偶联物	Unconjugated
阳性对照	HeLa,HepG2,Jurkat,Mouse lung
细胞定位	Nucleus
纯化	Affinity purification

## 抗原信息

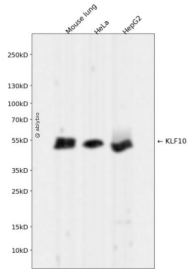
抗原信息	Recombinant fusion protein corresponding to Human KLF10.
序列	MLNFGASLQQTAEERMISERPKESEMYSWNKTAEKSDFEAVEALMSMSCSWKSDFKKYVENRPVTPVSDLSEENLLP GTPDFHTIPAFCLTPPYSPD

## 靶点信息

研究背景	This gene encodes a member of a family of proteins that feature C2H2-type zinc finger domains. The encoded protein is a transcriptional repressor that acts as an effector of transforming growth factor beta signaling. Activity of this protein may inhibit the growth of cancers, particularly pancreatic cancer. Alternative splicing results in multiple transcript variants. [provided by RefSeq, Jun 2013]
基因ID	7071

基因名	KLF10
Swiss	Q13118
别名	EGR-alpha; EGRA; TIEG; TIEG1

## 产品验证



Western blot analysis of KLF10 expressed in Mouse lung, HeLa, HepG2 using KLF10 Rabbit mAb at 1:1000. Secondary antibody: HRP Goat Anti-Rabbit IgG (H+L) at 1:5000. Lysates/proteins: 30ug per lane. Blocking buffer: 5% non-fat dry milk in TBST. Detection: ECL Enhanced Kit. Exposure time: 120s.

## 实验步骤

访问官网浏览详情: [www.ablybio.cn](http://www.ablybio.cn)