

Cyclophilin F Rabbit mAb

货号: **AYM30772**

产品信息

反应	Human,Mouse,Rat
宿主	Rabbit
克隆性	Monoclonal
预测反应	
应用	WB IHC IP
推荐浓度	WB: 1:500 - 1:2000 IHC: 1:50 - 1:200 IP: 1:20 - 1:50
理论分子量	16kDa/22kDa
实测分子量	18kDa
形式	Liquid
保存条件	Store at -20°C. Avoid freeze / thaw cycles. Buffer: PBS with 0.75% BSA,50% glycerol,pH7.3.
偶联物	Unconjugated
阳性对照	HepG2,B cells,Mouse kidney
细胞定位	Mitochondrion matrix
纯化	Affinity purification

抗原信息

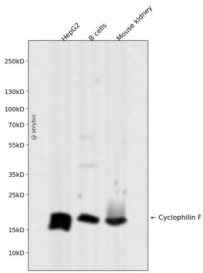
抗原信息	Recombinant fusion protein corresponding to Human Cyclophilin F.
序列	CSKGSQDPSSSSSSGNPLVYLDVDANGKPLGRVVLELKADVVPKTAENFRALCTGEKGFYKGFSTFHRVIPSFMCQAGD FTNHNGTGGKSIYGSRFPDENFTLKHVGPVLSMANAGPNTNGSQFFICTIKTDWLDGKHVVFGHVKEGMDVVKKIESF GSKSGRTSKKIVITDCGQLS

靶点信息

研究背景	The protein encoded by this gene is a member of the peptidyl-prolyl cis-trans isomerase (PPIase) family. PPIases catalyze the cis-trans isomerization of proline imidic peptide bonds in oligopeptides and accelerate the folding of proteins. This protein is part of the mitochondrial permeability transition pore in the inner mitochondrial membrane. Activation of this pore is thought to be involved in the induction of apoptotic and necrotic cell death.
------	---

基因ID	10105
基因名	PPIF
Swiss	P30405
别名	PPIF;CYP3;CyP-M;Cyp-D;CypD

产品验证



Western blot analysis of Cyclophilin F expressed in HepG2,B cells,Mouse kidney using Cyclophilin F Rabbit mAb at 1:1000. Secondary antibody: HRP Goat Anti-Rabbit IgG (H+L) at 1:5000. Lysates/proteins : 30ug per lane. Blocking buffer: 5% non-fat dry milk in TBST. Detection: ECL Enhanced Kit. Exposure time: 120s.

实验步骤

访问官网浏览详情: www.ablybio.cn