

Sumo 1 Rabbit mAb

货号: **AYM30768**

产品信息

反应	Human,Mouse,Rat
宿主	Rabbit
克隆性	Monoclonal
预测反应	
应用	WB IHC IF/ICC IP FC
推荐浓度	WB: 1:500 - 1:2000 IHC: 1:50 - 1:200 IF/ICC: 1:50 - 1:200 IP: 1:20 - 1:50 FC: 1:20 - 1:50
理论分子量	12kDa
实测分子量	12kDa
形式	Liquid
保存条件	Store at -20°C. Avoid freeze / thaw cycles. Buffer: PBS with 0.75% BSA,50% glycerol,pH7.3.
偶联物	Unconjugated
阳性对照	SW480,HeLa,A-431,NCI-H460,Mouse testis,Mouse liver,Mouse brain,Rat testis,Rat brain
细胞定位	Cell membrane,Cytoplasm,Nucleus,Nucleus membrane,Nucleus speckle,PML body
纯化	Affinity purification

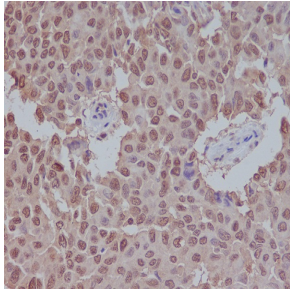
抗原信息

抗原信息	Recombinant fusion protein corresponding to Human Sumo 1 .
序列	MSDQEAKPSTEDLGDKKEGEYIKLVIGQDSSEIHFKVKMTTHLKKLKESYCQRQGVPMNLSRFLFEGQRIADNHTPKELG MEEEDVIEVYQEQTGGHSTV

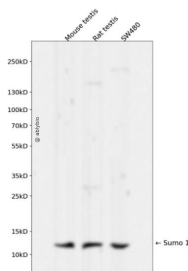
靶点信息

研究背景	This gene encodes a protein that is a member of the SUMO (small ubiquitin-like modifier) protein family. It functions in a manner similar to ubiquitin in that it is bound to target proteins as part of a post-translational modification system. However, unlike ubiquitin which targets proteins for degradation, this protein is involved in a variety of cellular processes, such as nuclear transport, transcriptional regulation, apoptosis, and protein stability. It is not active until the last four amino acids of the carboxy-terminus have been cleaved off. Several pseudogenes have been reported for this gene. Alternate transcriptional splice variants encoding different isoforms have been characterized. [provided by RefSeq, Jul 2008]
基因ID	7341
基因名	SUMO1
Swiss	P63165
别名	DAP1;GMP1;OFC10;PIC1;SEN2;SMT3;SMT3C;SMT3H3;UBL1;SUMO1;SUMO-1

产品验证



Immunohistochemical analysis of paraffin-embedded human breast carcinoma, using Sumo 1 Antibody .



Western blot analysis of Sumo 1 expressed in Mouse testis,Rat testis,SW480 using Sumo 1 Rabbit mAb at 1:1000. Secondary antibody: HRP Goat Anti-Rabbit IgG (H+L) at 1:5000. Lysates/proteins: 30ug per lane. Blocking buffer: 5% non-fat dry milk in TBST. Detection: ECL Enhanced Kit . Exposure time: 120s.

实验步骤

访问官网浏览详情: www.ablybio.cn