

# SERPINC1 Rabbit mAb

货号: **AYM30763**

## 产品信息

反应	Human
宿主	Rabbit
克隆性	Monoclonal
预测反应	
应用	WB IF/ICC
推荐浓度	<b>WB:</b> 1:500 - 1:2000 <b>IF/ICC:</b> 1:50 - 1:200
理论分子量	52kDa
实测分子量	53kDa
形式	Liquid
保存条件	Store at -20°C. Avoid freeze / thaw cycles. Buffer: PBS with 0.75% BSA, 50% glycerol, pH7.3.
偶联物	Unconjugated
阳性对照	Mouse plasma, Rat plasma
细胞定位	Secreted, extracellular space
纯化	Affinity purification

## 抗原信息

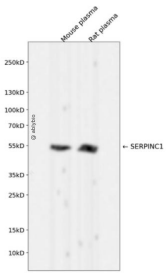
抗原信息	Recombinant fusion protein corresponding to Human SERPINC1 .
序列	HGSPVDICTAKPRDIPMNPNCIYRSPEKKATEDEGSEQKIPATNRRVWELSKANSRFATTFYQHLADSKNDNDNIFLSPLS ISTAFAMTKLGACNDTLQQLMEVFKFDTISEKTSQIHFFFAKLNCRLYRKANKSSKLVSANRLFGDKSLTFNETYQDISEL VYGAKLQPLDFKENAEQSRAAINKWVSNKTEGRITDVIPSEAINELTVLVLVNTIYFKGLWKS

## 靶点信息

研究背景	The protein encoded by this gene is a plasma protease inhibitor and a member of the serpin superfamily. This protein inhibits thrombin as well as other activated serine proteases of the coagulation system, and it regulates the blood coagulation cascade. The protein includes two functional domains: the heparin binding-domain at the N-terminus of the mature protein, and the reactive site domain at the C-terminus. The inhibitory activity is enhanced by the presence of heparin. More than 120 mutations have been identified for this gene, many of which are known to cause antithrombin-III deficiency.
------	--

基因ID	462
基因名	SERPINC1
Swiss	P01008
别名	SERPINC1;AT3;AT3D;ATIII;THPH7

## 产品验证



Western blot analysis of SERPINC1 expressed in Mouse plasma,Rat plasma using SERPINC1 Rabbit mAb at 1:1000. Secondary antibody: HRP Goat Anti-Rabbit IgG (H+L) at 1:5000. Lysates/proteins: 30ug per lane. Blocking buffer: 5% non-fat dry milk in TBST. Detection: ECL Enhanced Kit. Exposure time: 120s.

## 实验步骤

访问官网浏览详情: [www.ablybio.cn](http://www.ablybio.cn)