

CD21 Rabbit mAb

货号: **AYM30752**

产品信息

反应	Human,Mouse
宿主	Rabbit
克隆性	Monoclonal
预测反应	
应用	WB IHC ICC IP FC
推荐浓度	WB: 1:500 - 1:2000 IHC: 1:50 - 1:200 ICC: 1:50 - 1:200 IP: 1:20 - 1:50 FC: 1:20 - 1:50
理论分子量	110kDa/112kDa/118kDa/119kDa
实测分子量	155kDa
形式	Liquid
保存条件	Store at -20°C. Avoid freeze / thaw cycles. Buffer: PBS with 0.75% BSA,50% glycerol,pH7.3.
偶联物	Unconjugated
阳性对照	Raji,Daudi,K-562
细胞定位	Membrane,Single-pass type I membrane protein
纯化	Affinity purification

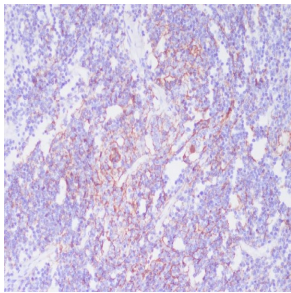
抗原信息

抗原信息	Recombinant fusion protein corresponding to Human CD21.
序列	IVTYTCDPDPEEGVNFILIGESTLRCTVDSQKTGTWSGPAPRCELSTSAVQC PHPQILRGRMVSGQKDRYTYNDTVIFACM FGFTLKGSKQIRCNAQGTWEPSAPVCEKECQAPPNILNGQKEDRHMVRFDPGTSIKYSCNPGYVLVGEESIQTSEGVWT PPVPQCKVAACEATGRQLLTKPQHQFVRPDVNSSCGEGYKLSGSVYQECQGTIPWFMEIRLCKEITCPPPPVIYNGAHTGS SLEDFPYGTTVTYTCNPGPERGVEFSLIGESTIRCTSNDQERGTWSGPA

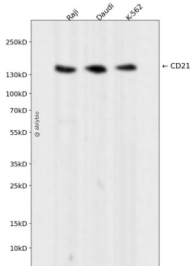
靶点信息

研究背景	This gene encodes a membrane protein, which functions as a receptor for Epstein-Barr virus (EBV) binding on B and T lymphocytes. Genetic variations in this gene are associated with susceptibility to systemic lupus erythematosus type 9 (SLEB9). Alternatively spliced transcript variants encoding different isoforms have been found for this gene.
基因ID	1380
基因名	CR2
Swiss	P20023
别名	CR2;C3DR;CD21;CR;CVID7;SLEB9

产品验证



Immunohistochemical analysis of paraffin-embedded human spleen, using CD21 Antibody.



Western blot analysis of CD21 expressed in Raji, Daudi, K-562 using CD21 Rabbit mAb at 1:1000. Secondary antibody: HRP Goat Anti-Rabbit IgG (H+L) at 1:5000. Lysates/proteins: 30ug per lane. Blocking buffer: 5% non-fat dry milk in TBST. Detection: ECL Enhanced Kit. Exposure time: 120s.

实验步骤

访问官网浏览详情: www.ablybio.cn