

# PKM2 Rabbit mAb

货号: **AYM30751**

## 产品信息

反应	Human,Mouse,Rat
宿主	Rabbit
克隆性	Monoclonal
预测反应	
应用	WB IHC IF/ICC FC
推荐浓度	<b>WB:</b> 1:500 - 1:2000 <b>IHC:</b> 1:50 - 1:200 <b>IF/ICC:</b> 1:50 - 1:200 <b>FC:</b> 1:20 - 1:50
理论分子量	56kDa/57kDa/58kDa
实测分子量	58kDa
形式	Liquid
保存条件	Store at -20°C. Avoid freeze / thaw cycles. Buffer: PBS with 0.75% BSA,50% glycerol,pH7.3.
偶联物	Unconjugated
阳性对照	U-251MG,293T,HeLa,A-549
细胞定位	Cytoplasm,Nucleus
纯化	Affinity purification

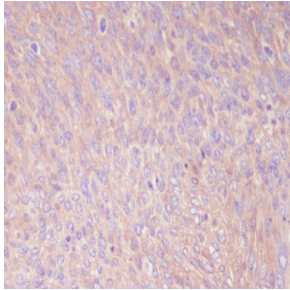
## 抗原信息

抗原信息	Recombinant fusion protein corresponding to Human PKM2.
序列	SEAGTAFIQTQQLHAAMADTFLEHMCRLDIDSPITARNTGIICTIGPASRSVETLKEMIKSGMNVARLNFSHGTHEYHAETI KNVRTATESFASDPILYRPVAVALDTKGPEIRTGLIKGSGTAEVELKKGATLKITLDNAYMEKCDENILWLDYKNICKVVEVG SKIYVDDGLISLQVKQKGADFLVTEVENGGSLGSKKGVNLPAAV

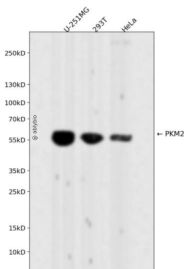
## 靶点信息

研究背景	This gene encodes a protein involved in glycolysis. The encoded protein is a pyruvate kinase that catalyze s the transfer of a phosphoryl group from phosphoenolpyruvate to ADP, generating ATP and pyruvate. Thi s protein has been shown to interact with thyroid hormone and may mediate cellular metabolic effects in duced by thyroid hormones. This protein has been found to bind Opa protein, a bacterial outer membrane protein involved in gonococcal adherence to and invasion of human cells, suggesting a role of this protein in bacterial pathogenesis. Several alternatively spliced transcript variants encoding a few distinct isoform s have been reported.
基因ID	5315
基因名	PKM
Swiss	P14618
别名	CTHBP;HEL-S-30;OIP3;PK3;PKM2;TCB;THBP1;PKM

## 产品验证



Immunohistochemical analysis of paraffin-embedded human cervix cancer, using PKM2 Antibody.



Western blot analysis of PKM2 expressed in U-251MG,293T,HeLa using PKM2 Rabbit mAb at 1:1000. Secondary antibody: HRP Goat Anti-Rabbit IgG (H+L) at 1:5000. Lysates/proteins: 30ug per lane. Blocking buffer: 5% non-fat dry milk in TBST. Detection: ECL Enhanced Kit. Exposure time: 120s.

## 实验步骤

访问官网浏览详情: [www.ablybio.cn](http://www.ablybio.cn)