

Cyclin A1/A2 Rabbit mAb

货号: **AYM30749**

产品信息

反应	Human
宿主	Rabbit
克隆性	Monoclonal
预测反应	
应用	WB IHC IP
推荐浓度	WB: 1:500 - 1:2000 IHC: 1:50 - 1:200 IP: 1:20 - 1:50
理论分子量	52,49kDa
实测分子量	52,49kDa
形式	Liquid
保存条件	Store at -20°C. Avoid freeze / thaw cycles. Buffer: PBS with 0.75% BSA,50% glycerol,pH7.3.
偶联物	Unconjugated
阳性对照	HCT116,Jurkat,Mouse thymus
细胞定位	cytoplasm,cytosol,female pronucleus,male pronucleus,nucleoplasm,nucleus
纯化	Affinity purification

抗原信息

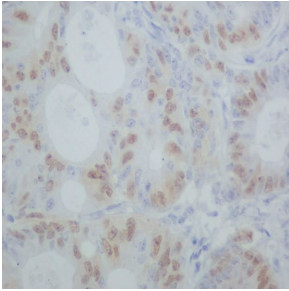
抗原信息	Recombinant fusion protein corresponding to Human Cyclin A1/A2.
序列	RGKLQLVGTAAMLLASKFEEIYPPEVAEFVYITDDTYTKKQVLRMEHLVLKVLTFDLAAPTQVNFQFLTYFLHQQPANCKVES LAMFLGELSLIDADPYLKYLPVSIAGAAFHLALYVTGQSWPESLIRKTYTLESCLKPCLMDLHQTYLKAPQHAQQSIREKYK NSKYHGVSLNPPETLNL

靶点信息

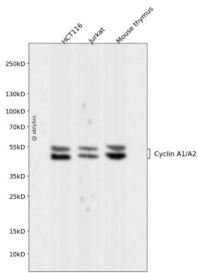
研究背景	
基因ID	890,8900
基因名	CCNA2,CCNA1

Swiss	P20248/P78396
别名	

产品验证



Immunohistochemical analysis of paraffin-embedded human colon cancer, using Cyclin A1/A2 Antibody.



Western blot analysis of Cyclin A1/A2 expressed in HCT116, Jurkat, Mouse thymus using Cyclin A1/A2 Rabbit mAb at 1:1000. Secondary antibody: HRP Goat Anti-Rabbit IgG (H+L) at 1:5000. Lysates/proteins: 30ug per lane. Blocking buffer: 5% non-fat dry milk in TBST. Detection: ECL Enhanced Kit. Exposure time: 120s.

实验步骤

访问官网浏览详情: www.ablybio.cn