

# Phospho-MEK1 (T292) Rabbit mAb

货号: **AYM30747**

## 产品信息

反应	Human
宿主	Rabbit
克隆性	Monoclonal
预测反应	
应用	WB
推荐浓度	<b>WB:</b> 1:500 - 1:2000
理论分子量	45kDa
实测分子量	45kDa
形式	Liquid
保存条件	Store at -20°C. Avoid freeze / thaw cycles. Buffer: PBS with 0.75% BSA,50% glycerol,pH7.3.
偶联物	Unconjugated
阳性对照	HeLa,C6
细胞定位	Cytoplasm,Membrane,Nucleus,Peripheral membrane protein,centrosome,cytoskeleton,microtubule organizing center,spindle pole body
纯化	Affinity purification

## 抗原信息

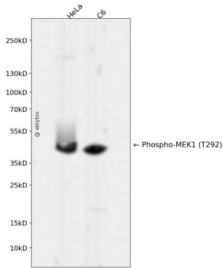
抗原信息	Recombinant fusion protein corresponding to Human Phospho-MEK1 (T292).
序列	PLSSY

## 靶点信息

研究背景	The protein encoded by this gene is a member of the dual specificity protein kinase family, which acts as a mitogen-activated protein (MAP) kinase kinase. MAP kinases, also known as extracellular signal-regulated kinases (ERKs), act as an integration point for multiple biochemical signals. This protein kinase lies upstream of MAP kinases and stimulates the enzymatic activity of MAP kinases upon wide variety of extra- and intracellular signals. As an essential component of MAP kinase signal transduction pathway, this kinase is involved in many cellular processes such as proliferation, differentiation, transcription regulation and development. [provided by RefSeq, Jul 2008]
------	--

基因ID	5604
基因名	MAP2K1
Swiss	Q02750
别名	CFC3; MAPKK1; MEK1; MKK1; PRKMK1

## 产品验证



Western blot analysis of Phospho-MEK1 (T292) expressed in HeLa,C6 using Phospho-MEK1 (T292) R abbit mAb at 1:1000. Secondary antibody: HRP Goat Anti-Rabbit IgG (H+L) at 1:5000. Lysates/prote ins: 30ug per lane. Blocking buffer: 5% non-fat dry milk in TBST. Detection: ECL Enhanced Kit. Expo sure time: 120s.

## 实验步骤

访问官网浏览详情: [www.ablybio.cn](http://www.ablybio.cn)