

# GFPT1 Rabbit mAb

货号: **AYM30740**

## 产品信息

反应	Human,Mouse,Rat
宿主	Rabbit
克隆性	Monoclonal
预测反应	
应用	WB IHC IP
推荐浓度	<b>WB:</b> 1:500 - 1:2000 <b>IHC:</b> 1:50 - 1:200 <b>IP:</b> 1:20 - 1:50
理论分子量	76kDa/78kDa
实测分子量	79kDa
形式	Liquid
保存条件	Store at -20°C. Avoid freeze / thaw cycles. Buffer: PBS with 0.75% BSA,50% glycerol,pH7.3.
偶联物	Unconjugated
阳性对照	HeLa,RD,Mouse large intestine,Rat testis,Rat spleen,Rat lung
细胞定位	cytosol,extracellular exosome
纯化	Affinity purification

## 抗原信息

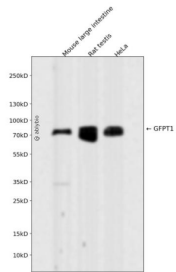
抗原信息	Recombinant fusion protein corresponding to Human GFPT1.
序列	LVDKLMVPVIMIIMRDHTYAKCQNALQQVVARQGRPVICDKEDTETIKNTKRTIKVPHSVDCLQGILSVIPLQLLAFHLAVLR GYDVFPRNLAKSVTVE

## 靶点信息

研究背景	This gene encodes the first and rate-limiting enzyme of the hexosamine pathway and controls the flux of glucose into the hexosamine pathway. The product of this gene catalyzes the formation of glucosamine 6-phosphate.
基因ID	2673

基因名	GFPT1
Swiss	Q06210
别名	GFPT1;CMS12;CMSTA1;GFA;GFAT;GFAT 1;GFAT1;GFAT1m;GFPT;GFPT1L;MSLG

## 产品验证



Western blot analysis of GFPT1 expressed in Mouse large intestine,Rat testis,HeLa using GFPT1 Rabbit m Ab at 1:1000. Secondary antibody: HRP Goat Anti-Rabbit IgG (H+L) at 1:5000. Lysates/proteins: 30ug per lane. Blocking buffer: 5% non-fat dry milk in TBST. Detection: ECL Enhanced Kit. Exposure time: 120s.

## 实验步骤

访问官网浏览详情: [www.ablybio.cn](http://www.ablybio.cn)