

GluR2 Rabbit mAb

货号: **AYM30725**

产品信息

反应	Human,Mouse,Rat
宿主	Rabbit
克隆性	Monoclonal
预测反应	
应用	WB IF/ICC IP
推荐浓度	WB: 1:500 - 1:2000 IF/ICC: 1:50 - 1:200 IP: 1:20 - 1:50
理论分子量	93kDa/98kDa/100kDa
实测分子量	98kDa
形式	Liquid
保存条件	Store at -20°C. Avoid freeze / thaw cycles. Buffer: PBS with 0.75% BSA,50% glycerol,pH7.3.
偶联物	Unconjugated
阳性对照	Mouse brain
细胞定位	Cell junction,Cell membrane,Endoplasmic reticulum membrane,Multi-pass membrane protein,postsynaptic cell membrane,synapse
纯化	Affinity purification

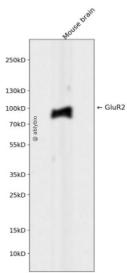
抗原信息

抗原信息	Recombinant fusion protein corresponding to Human GluR2.
序列	NSIQIGGLFPRGADQEYSAFRVGMVQFSTSEFRLTPHIDNLEVANSFAVTNAFCSQFSRGVYAIFGFYDKKSVNTITSFCGT LHVSFITPSFPTDGTGTHPFVIQMRPDLKCALLSLEYQWDFAYLYDSRGLSTLQAVLDSAAEKKWQVTAINVGNINNDK KDEMYRSLFQDLELKKERRVILDCERDKVNDIVDQVITIGKHV

靶点信息

研究背景	Glutamate receptors are the predominant excitatory neurotransmitter receptors in the mammalian brain and are activated in a variety of normal neurophysiologic processes. This gene product belongs to a family of glutamate receptors that are sensitive to alpha-amino-3-hydroxy-5-methyl-4-isoxazole propionate (AMPA), and function as ligand-activated cation channels. These channels are assembled from 4 related subunits, GRIA1-4. The subunit encoded by this gene (GRIA2) is subject to RNA editing (CAG->CGG; Q->R) within the second transmembrane domain, which is thought to render the channel impermeable to Ca ²⁺ . Human and animal studies suggest that pre-mRNA editing is essential for brain function, and defective GRIA2 RNA editing at the Q/R site may be relevant to amyotrophic lateral sclerosis (ALS) etiology. Alternative splicing, resulting in transcript variants encoding different isoforms, (including the flip and flop isoforms that vary in their signal transduction properties), has been noted for this gene.
基因ID	2891
基因名	GRIA2
Swiss	P42262
别名	GRIA2;GLUR2;GLURB;GluA2;GluR-K2;HBGR2

产品验证



Western blot analysis of GluR2 expressed in Mouse brain using GluR2 Rabbit mAb at 1:1000. Secondary antibody: HRP Goat Anti-Rabbit IgG (H+L) at 1:5000. Lysates/proteins: 30ug per lane. Blocking buffer: 5% non-fat dry milk in TBST. Detection: ECL Enhanced Kit. Exposure time: 120s.

实验步骤

访问官网浏览详情: www.ablybio.cn