

CYP1B1 Rabbit mAb

货号: **AYM30714**

产品信息

| | |
|-------|--|
| 反应 | Human,Mouse,Rat |
| 宿主 | Rabbit |
| 克隆性 | Monoclonal |
| 预测反应 | |
| 应用 | WB IHC FC |
| 推荐浓度 | WB: 1:500 - 1:2000 IHC: 1:50 - 1:200 FC: 1:20 - 1:50 |
| 理论分子量 | 60kDa |
| 实测分子量 | 61kDa |
| 形式 | Liquid |
| 保存条件 | Store at -20°C. Avoid freeze / thaw cycles. Buffer: PBS with 0.75% BSA,50% glycerol,pH7.3. |
| 偶联物 | Unconjugated |
| 阳性对照 | MCF-7 cells, mouse heart tissue, PC-3 cells |
| 细胞定位 | Endoplasmic reticulum membrane, Microsome membrane, Mitochondrion, Peripheral membrane protein |
| 纯化 | Affinity purification |

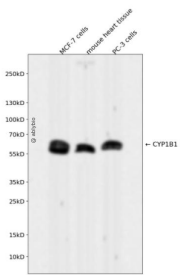
抗原信息

| | |
|------|---|
| 抗原信息 | Recombinant fusion protein corresponding to Human CYP1B1. |
| 序列 | MPWLQYFPNPVRTVREFEQLNRNFSNFILDKFLRHCESLRPGAAPRDMMDAFILSAEKKAAGDSHGCGARLDLENVPAT ITDIFGASQDTLSTALQWLLLLFTRYPDVQTRVQAELDQVVGRDRLPCMGDQPNLPYVLAFLYEAMRFSSFPVTIPHATT ANTSVLGYHIPKDTVVFNQWSVNHDPKWPENFDPARFLDKDGLINKDLTSRVMIFSVGKRRRCIGEELSKMQLFLFISI LAHQCDFRANPNPAKMNFSYGLTIKPKSFKVNVTLRESMELLDQSAVQNLQAKETCQ |

靶点信息

| | |
|-------|--|
| 研究背景 | This gene encodes a member of the cytochrome P450 superfamily of enzymes. The cytochrome P450 proteins are monooxygenases which catalyze many reactions involved in drug metabolism and synthesis of cholesterol, steroids and other lipids. The enzyme encoded by this gene localizes to the endoplasmic reticulum and metabolizes procarcinogens such as polycyclic aromatic hydrocarbons and 17beta-estradiol. Mutations in this gene have been associated with primary congenital glaucoma; therefore it is thought that the enzyme also metabolizes a signaling molecule involved in eye development, possibly a steroid. |
| 基因ID | 1545 |
| 基因名 | CYP1B1 |
| Swiss | Q16678 |
| 别名 | CYP1B1;ASGD6;CP1B;CYPIB1;GLC3A;P4501B1 |

产品验证



Western blot analysis of CYP1B1 expressed in MCF-7 cells, mouse heart tissue, PC-3 cells using CYP1B1 R abbit mAb at 1:1000. Secondary antibody: HRP Goat Anti-Rabbit IgG (H+L) at 1:5000. Lysates/proteins: 30ug per lane. Blocking buffer: 5% non-fat dry milk in TBST. Detection: ECL Enhanced Kit. Exposure time: 120s.

实验步骤

访问官网浏览详情: www.ablybio.cn