

# SCF Rabbit mAb

货号: **AYM30712**

## 产品信息

反应	Human
宿主	Rabbit
克隆性	Monoclonal
预测反应	
应用	WB IHC IF/ICC FC
推荐浓度	<b>WB:</b> 1:500 - 1:2000 <b>IHC:</b> 1:50 - 1:200 <b>IF/ICC:</b> 1:50 - 1:200 <b>FC:</b> 1:20 - 1:50
理论分子量	26kDa/27kDa/30kDa
实测分子量	18kDa
形式	Liquid
保存条件	Store at -20°C. Avoid freeze / thaw cycles. Buffer: PBS with 0.75% BSA, 50% glycerol, pH7.3.
偶联物	Unconjugated
阳性对照	MCF7, Rat lung, Rat liver, Mouse testis, Mouse spleen
细胞定位	Cell membrane, Cytoplasm, Secreted, Single-pass type I membrane protein, cytoskeleton
纯化	Affinity purification

## 抗原信息

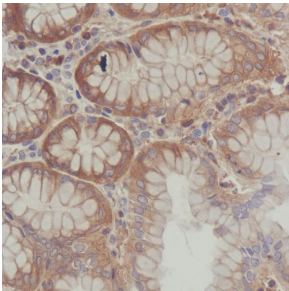
抗原信息	Recombinant fusion protein corresponding to Human SCF.
序列	SKDLKKSFKSPEPRLFTPEEFFRIFNRSIDAFKDFVVASETSDCVSSTLSPEKDSRVSVTKPFMLPPVAA

## 靶点信息

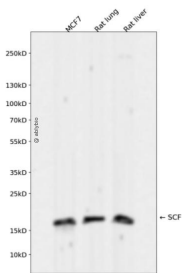
研究背景	This gene encodes the ligand of the tyrosine-kinase receptor encoded by the KIT locus. This ligand is a pleiotropic factor that acts in utero in germ cell and neural cell development, and hematopoiesis, all believed to reflect a role in cell migration. In adults, it functions pleiotropically, while mostly noted for its continued requirement in hematopoiesis. Two transcript variants encoding different isoforms have been found for this gene.
------	---

基因ID	4254
基因名	KITLG
Swiss	P21583
别名	KITLG;DCUA;DFNA69;FPH2;FPHH;KL-1;Kitl;MGF;SCF;SF;SHEP7

## 产品验证



Immunohistochemical analysis of paraffin-embedded human stomach, using SCF Antibody.



Western blot analysis of SCF expressed in MCF7,Rat lung,Rat liver using SCF Rabbit mAb at 1:1 000. Secondary antibody: HRP Goat Anti-Rabbit IgG (H+L) at 1:5000. Lysates/proteins: 30ug per lane. Blocking buffer: 5% non-fat dry milk in TBST. Detection: ECL Enhanced Kit. Exposure time: 120s.

## 实验步骤

访问官网浏览详情: [www.ablybio.cn](http://www.ablybio.cn)