

# Pyruvate Dehydrogenase E1 beta subunit Rabbit mAb

货号: AYM30696

## 产品信息

反应	Human,Mouse,Rat
宿主	Rabbit
克隆性	Monoclonal
预测反应	
应用	WB IHC IF/ICC IP FC
推荐浓度	<b>WB:</b> 1:500 - 1:2000 <b>IHC:</b> 1:50 - 1:200 <b>IF/ICC:</b> 1:50 - 1:200 <b>IP:</b> 1:20 - 1:50 <b>FC:</b> 1:20 - 1:50
理论分子量	35kDa
实测分子量	35kDa
形式	Liquid
保存条件	Store at -20°C. Avoid freeze / thaw cycles. Buffer: PBS with 0.75% BSA,50% glycerol,pH7.3.
偶联物	Unconjugated
阳性对照	293T,K-562,U-251MG,Mouse liver,Mouse skeletal muscle,Mouse heart,Rat skeletal muscle,Rat kidney,Rat heart
细胞定位	Mitochondrion matrix
纯化	Affinity purification

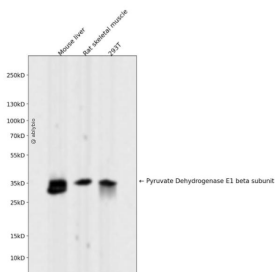
## 抗原信息

抗原信息	Recombinant fusion protein corresponding to Human Pyruvate Dehydrogenase E1 beta subunit.
序列	GVECEVINMRTIRPMDMETIEASVMKTNHLVTVEGGWPQFGVGAEICARIMEGPAFNFLDAPAVRVTGADVPMPYAKILED NSIPQVKDIIFAIKKTLNI

## 靶点信息

研究背景	The pyruvate dehydrogenase (PDH) complex is a nuclear-encoded mitochondrial multienzyme complex that catalyzes the overall conversion of pyruvate to acetyl-CoA and carbon dioxide, and provides the primary link between glycolysis and the tricarboxylic acid (TCA) cycle. The PDH complex is composed of multiple copies of three enzymatic components: pyruvate dehydrogenase (E1), dihydrolipoamide acetyltransferase (E2) and lipoamide dehydrogenase (E3). The E1 enzyme is a heterotetramer of two alpha and two beta subunits. This gene encodes the E1 beta subunit. Mutations in this gene are associated with pyruvate dehydrogenase E1-beta deficiency. Alternatively spliced transcript variants have been found for this gene. [provided by RefSeq, Mar 2012]
基因ID	5162
基因名	PDHB
Swiss	P11177
别名	PDHBD; PDHE1-B; PHE1B

## 产品验证



Western blot analysis of Pyruvate Dehydrogenase E1 beta subunit expressed in Mouse liver, Rat skeletal muscle, 293T using Pyruvate Dehydrogenase E1 beta subunit Rabbit mAb at 1:1000. Secondary antibody: HRP Goat Anti-Rabbit IgG (H+L) at 1:5000. Lysates/proteins: 30ug per lane. Blocking buffer: 5% non-fat dry milk in TBST. Detection: ECL Enhanced Kit. Exposure time: 120s

## 实验步骤

访问官网浏览详情: [www.ablybio.cn](http://www.ablybio.cn)