

ACE1 Rabbit mAb

货号: **AYM30694**

产品信息

反应	Human,Mouse
宿主	Rabbit
克隆性	Monoclonal
预测反应	
应用	WB IHC FC
推荐浓度	WB: 1:500 - 1:2000 IHC: 1:50 - 1:200 FC: 1:20 - 1:50
理论分子量	78kDa/83kDa/131kDa/149kDa
实测分子量	195kDa
形式	Liquid
保存条件	Store at -20°C. Avoid freeze / thaw cycles. Buffer: PBS with 0.75% BSA,50% glycerol,pH7.3.
偶联物	Unconjugated
阳性对照	Mouse lung,Mouse kidney,Rat lung
细胞定位	Cell membrane,Cytoplasm,Secreted,Single-pass type I membrane protein
纯化	Affinity purification

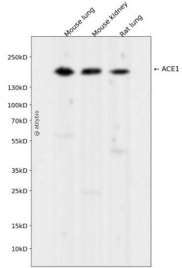
抗原信息

抗原信息	Recombinant fusion protein corresponding to Human ACE1.
序列	LHQCDIYRSTKAGAKLRKVLQAGSSRPWQEVLDKDMVGLDALDAQPLLKYFQPVTQWLQEQNQNGEVLGWPEYQWHP PLPDNYPEGIDLVTDEAEASKFVEEYDRTSQVVWNEYAEANWNYNTNITTETSKILLQKNMQIANHTLKYGTQARKFDVNV LQNTTIKRIIKVQDLERAALPAQELEEYNKILLDMETTYSVATVCH

靶点信息

研究背景	This gene encodes an enzyme involved in catalyzing the conversion of angiotensin I into a physiologically active peptide angiotensin II. Angiotensin II is a potent vasopressor and aldosterone-stimulating peptide that controls blood pressure and fluid-electrolyte balance. This enzyme plays a key role in the renin-angiotensin system. Many studies have associated the presence or absence of a 287 bp Alu repeat element in this gene with the levels of circulating enzyme or cardiovascular pathophysiology. Multiple alternatively spliced transcript variants encoding different isoforms have been identified, and two most abundant spliced variants encode the somatic form and the testicular form, respectively, that are equally active.
基因ID	1636
基因名	ACE
Swiss	P12821
别名	ACE;ACE1;CD143;DCP;DCP1;angiotensin-converting enzyme;ICH;MVCD3

产品验证



Western blot analysis of ACE1 expressed in Mouse lung, Mouse kidney, Rat lung using ACE1 Rabbit mAb at 1:1000. Secondary antibody: HRP Goat Anti-Rabbit IgG (H+L) at 1:5000. Lysates/proteins: 30ug per lane. Blocking buffer: 5% non-fat dry milk in TBST. Detection: ECL Enhanced Kit. Exposure time: 120s.

实验步骤

访问官网浏览详情: www.ablybio.cn