

KLF4 Rabbit mAb

货号: **AYM30686**

产品信息

反应	Human,Mouse,Rat
宿主	Rabbit
克隆性	Monoclonal
预测反应	
应用	WB IHC IF/ICC
推荐浓度	WB: 1:500 - 1:2000 IHC: 1:50 - 1:200 IF/ICC: 1:50 - 1:200
理论分子量	6kDa/12kDa/45kDa/51kDa/54kDa
实测分子量	54kDa
形式	Liquid
保存条件	Store at -20°C. Avoid freeze / thaw cycles. Buffer: PBS with 0.75% BSA,50% glycerol,pH7.3.
偶联物	Unconjugated
阳性对照	HeLa,HCT116,HT-29
细胞定位	Nucleus
纯化	Affinity purification

抗原信息

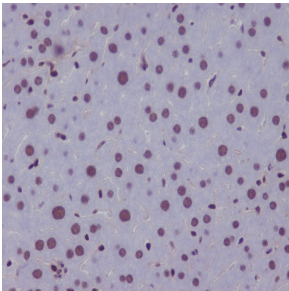
抗原信息	Recombinant fusion protein corresponding to Human KLF4.
序列	KRGRRSWPRKRTATHTCDYAGCGKTYTKSSHLKAHLRTHTEKPYHCDWDGCGWKFARSDDELTRHYRKHTGHRPFQC QKCDRAFSRSDHLALHMKRHF

靶点信息

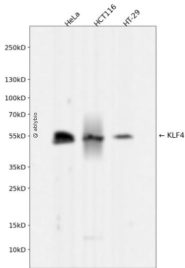
研究背景	This gene encodes a protein that belongs to the Kruppel family of transcription factors. The encoded zinc finger protein is required for normal development of the barrier function of skin. The encoded protein is thought to control the G1-to-S transition of the cell cycle following DNA damage by mediating the tumor suppressor gene p53. Mice lacking this gene have a normal appearance but lose weight rapidly, and die shortly after birth due to fluid evaporation resulting from compromised epidermal barrier function. Alternative splicing results in multiple transcript variants encoding different isoforms.
------	---

基因ID	9314
基因名	KLF4
Swiss	O43474
别名	EZF;GKLF;KLF4

产品验证



Immunohistochemical analysis of paraffin-embedded mouse liver, using KLF4 Antibody.



Western blot analysis of KLF4 expressed in HeLa,HCT116,HT-29 using KLF4 Rabbit mAb at 1:10 00. Secondary antibody: HRP Goat Anti-Rabbit IgG (H+L) at 1:5000. Lysates/proteins: 30ug per lane. Blocking buffer: 5% non-fat dry milk in TBST. Detection: ECL Enhanced Kit. Exposure time: 120s.

实验步骤

访问官网浏览详情: www.ablybio.cn