

FACL4 Rabbit mAb

货号: **AYM30675**

产品信息

| | |
|-------|--|
| 反应 | Human,Mouse,Rat |
| 宿主 | Rabbit |
| 克隆性 | Monoclonal |
| 预测反应 | |
| 应用 | WB IHC IF/ICC IP FC |
| 推荐浓度 | WB: 1:500 - 1:2000 IHC: 1:50 - 1:200 IF/ICC: 1:50 - 1:200 IP: 1:20 - 1:50 FC: 1:20 - 1:50 |
| 理论分子量 | 74kDa/79kDa |
| 实测分子量 | 79kDa |
| 形式 | Liquid |
| 保存条件 | Store at -20°C. Avoid freeze / thaw cycles. Buffer: PBS with 0.75% BSA,50% glycerol,pH7.3. |
| 偶联物 | Unconjugated |
| 阳性对照 | HeLa,HepG2,Mouse liver,Rat liver |
| 细胞定位 | Endoplasmic reticulum membrane, Microsome membrane, Mitochondrion outer membrane, Peroxisome membrane, Single-pass type III membrane protein |
| 纯化 | Affinity purification |

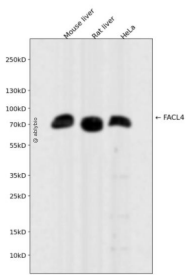
抗原信息

| | |
|------|---|
| 抗原信息 | Recombinant fusion protein corresponding to Human FACL4. |
| 序列 | MAKRIKAKPTSDKPGSPYRSVTHFDSLAVIDIPGADTLDKLFDHAVSKFGKKDSLGTREILSEENEMQPNGKVFKLILGNY KWMNYLEVNRVNNFGSGLTALGLKPKNTIAIFCETRAEWMIAAQTCFYNFPLVTLTYATLGKEAVVHGLNESEASYLITSV ELLESKLTALLDISCVKHIIYVDNKAINKAEYPEGFEIHSMQSVEELGSPENLGIPPSRPTPSDMAIVMYTSGSTGRPKG VMMHHSNLIAGMTGQCERIPGLGPKDITYIGYLPL |

靶点信息

| | |
|-------|---|
| 研究背景 | The protein encoded by this gene is an isozyme of the long-chain fatty-acid-coenzyme A ligase family. Although differing in substrate specificity, subcellular localization, and tissue distribution, all isozymes of this family convert free long-chain fatty acids into fatty acyl-CoA esters, and thereby play a key role in lipid biosynthesis and fatty acid degradation. This isozyme preferentially utilizes arachidonate as substrate. The absence of this enzyme may contribute to the mental retardation or Alport syndrome. Alternative splicing of this gene generates multiple transcript variants. |
| 基因ID | 2182 |
| 基因名 | ACSL4 |
| Swiss | O60488 |
| 别名 | ACSL4;ACS4;FACL4;LACS4;MRX63;MRX68 |

产品验证



Western blot analysis of FA CL4 expressed in Mouse liver, Rat liver, HeLa using FA CL4 Rabbit mAb at 1:10 00. Secondary antibody: HRP Goat Anti-Rabbit IgG (H+L) at 1:5000. Lysates/proteins: 30ug per lane. Blocking buffer: 5% non-fat dry milk in TBST. Detection: ECL Enhanced Kit. Exposure time: 120s.

实验步骤

访问官网浏览详情: www.ablybio.cn