

KMT6 / EZH2 Rabbit mAb

货号: **AYM30674**

产品信息

反应	Human,Mouse,Rat
宿主	Rabbit
克隆性	Monoclonal
预测反应	
应用	WB IHC IF/ICC FC
推荐浓度	WB: 1:500 - 1:2000 IHC: 1:50 - 1:200 IF/ICC: 1:50 - 1:200 FC: 1:20 - 1:50
理论分子量	79kDa/81kDa/84kDa/85kDa/86kDa
实测分子量	98kDa
形式	Liquid
保存条件	Store at -20°C. Avoid freeze / thaw cycles. Buffer: PBS with 0.75% BSA,50% glycerol,pH7.3.
偶联物	Unconjugated
阳性对照	MCF7,293T,HepG2,HeLa,SW620,Raji,Mouse testis
细胞定位	Nucleus
纯化	Affinity purification

抗原信息

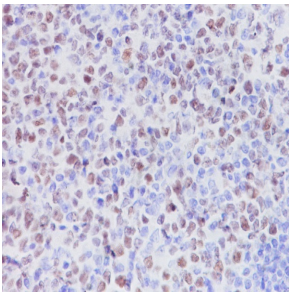
抗原信息	Recombinant fusion protein corresponding to Human KMT6 / EZH2.
序列	LERTEILNQEWKORRIQPVHILTSVSSLRGTRECSVTSDDLDFPTQVIPLKTLNAVASVPIMYSWSPLQQNFMVEDETVLHNIPYMGDEVLDQDGTFFIEELI

靶点信息

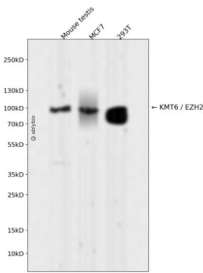
研究背景	This gene encodes a member of the Polycomb-group (PcG) family. PcG family members form multimeric protein complexes, which are involved in maintaining the transcriptional repressive state of genes over successive cell generations. This protein associates with the embryonic ectoderm development protein, the VAV1 oncoprotein, and the X-linked nuclear protein. This protein may play a role in the hematopoietic and central nervous systems. Multiple alternatively spliced transcript variants encoding distinct isoforms have been identified for this gene.
------	--

基因ID	2146
基因名	EZH2
Swiss	Q15910
别名	ENX-1;ENX1;EZH1;EZH2b;KMT6;KMT6A;WVS;WVS2;EZH2;KMT6 / EZH2

产品验证



Immunohistochemical analysis of paraffin-embedded human tonsil, using KMT6 / EZH2 Antibody.



Western blot analysis of KMT6 / EZH2 expressed in Mouse testis, MCF7, 293T using KMT6 / EZH2 Rabbit mAb at 1:1000. Secondary antibody: HRP Goat Anti-Rabbit IgG (H+L) at 1:5000. Lysates / proteins: 30ug per lane. Blocking buffer: 5% non-fat dry milk in TBST. Detection: ECL Enhanced Kit. Exposure time: 120s.

实验步骤

访问官网浏览详情: www.ablybio.cn