

Placental lactogen Rabbit mAb

货号: **AYM30666**

产品信息

反应	Human
宿主	Rabbit
克隆性	Monoclonal
预测反应	
应用	WB
推荐浓度	WB: 1:500 - 1:2000
理论分子量	25kDa
实测分子量	25kDa
形式	Liquid
保存条件	Store at -20°C. Avoid freeze / thaw cycles. Buffer: PBS with 0.75% BSA,50% glycerol,pH7.3.
偶联物	Unconjugated
阳性对照	human placenta tissue
细胞定位	
纯化	Affinity purification

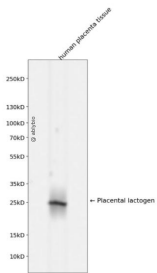
抗原信息

抗原信息	Recombinant fusion protein corresponding to Human Placental lactogen.
序列	MAPGSRTSLLLFALLCLPWLQEAGAVQTVPLSRLFDHAMLQAHRAHQLAIDTYQEFEEYIPKDQKYSFLHDSQTSFCFS DSIPTPSNMEETQKSNLE

靶点信息

研究背景	The protein encoded by this gene is a member of the somatotropin/prolactin family of hormones and plays an important role in growth control. The gene is located at the growth hormone locus on chromosome 17 along with four other related genes in the same transcriptional orientation; an arrangement which is thought to have evolved by a series of gene duplications. Although the five genes share a remarkably high degree of sequence identity, they are expressed selectively in different tissues. Alternative splicing generates additional isoforms of each of the five growth hormones, leading to further diversity and potential for specialization. This particular family member is expressed mainly in the placenta and utilizes multiple transcription initiation sites. Expression of the identical mature proteins for chorionic somatomammotropin hormones 1 and 2 is upregulated during development, although the ratio of 1 to 2 increases by term. Mutations in this gene result in placental lactogen deficiency and Silver-Russell syndrome.
基因ID	1442
基因名	CSH1
Swiss	P01243
别名	CSH1; CS-1; CSA; CSMT; GHB3; PL; hCS-1; hCS-A; chorionic somatomammotropin hormone 1

产品验证



Western blot analysis of Placental lactogen expressed in human placenta tissue using Placental lactogen Rabbit mAb at 1:1000. Secondary antibody: HRP Goat Anti-Rabbit IgG (H+L) at 1:5000. Lysates/proteins: 30ug per lane. Blocking buffer: 5% non-fat dry milk in TBST. Detection: ECL Enhanced Kit. Exposure time: 120s.

实验步骤

访问官网浏览详情: www.ablybio.cn