

CD39 Rabbit mAb

货号: **AYM30664**

产品信息

反应	Human,Mouse,Rat
宿主	Rabbit
克隆性	Monoclonal
预测反应	
应用	WB
推荐浓度	WB: 1:500 - 1:2000
理论分子量	34kDa/42kDa/46kDa/57kDa/58kDa/59kDa
实测分子量	70kDa
形式	Liquid
保存条件	Store at -20°C. Avoid freeze / thaw cycles. Buffer: PBS with 0.75% BSA,50% glycerol,pH7.3.
偶联物	Unconjugated
阳性对照	Mouse spleen,Rat lung
细胞定位	Membrane,Multi-pass membrane protein
纯化	Affinity purification

抗原信息

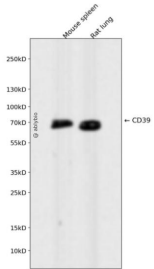
抗原信息	Recombinant fusion protein corresponding to Human CD39.
序列	MESEELADRVLDVVERSLSNYPFDQFQARIITGQEEGAYGWITINYLLGKFSQKTRWFSIVPYETNNQETFGALDLGGAST QVTFVPQNQTIESPDNALQFRLYGKDYNVYTHSFLCYGKDQALWQKLAKDIQVASNEILRDPCHFPGYKKVNVSDLYKT PCTKRFEMTLPFQQFEIQG

靶点信息

研究背景	The protein encoded by this gene is a plasma membrane protein that hydrolyzes extracellular ATP and ADP to AMP. Inhibition of this protein's activity may confer anticancer benefits. Several transcript variants encoding different isoforms have been found for this gene.
基因ID	953

基因名	ENTPD1
Swiss	P49961
别名	ENTPD1;ATPDase;CD39;NTPDase-1;SPG64

产品验证



Western blot analysis of CD39 expressed in Mouse spleen,Rat lung using CD39 Rabbit mAb at 1:1000. Secondary antibody: HRP Goat Anti-Rabbit IgG (H+L) at 1:5000. Lysates/proteins: 30ug per lane. Blocking buffer: 5% non-fat dry milk in TBST. Detection: ECL Enhanced Kit. Exposure time: 120s.

实验步骤

访问官网浏览详情: www.ablybio.cn