

# FSH beta (FSHB) Rabbit mAb

货号: **AYM30662**

## 产品信息

反应	Human
宿主	Rabbit
克隆性	Monoclonal
预测反应	
应用	WB IP
推荐浓度	<b>WB:</b> 1:500 - 1:2000 <b>IP:</b> 1:20 - 1:50
理论分子量	14kDa
实测分子量	22kDa
形式	Liquid
保存条件	Store at -20°C. Avoid freeze / thaw cycles. Buffer: PBS with 0.75% BSA,50% glycerol,pH7.3.
偶联物	Unconjugated
阳性对照	Mouse brain,Mouse lung,Rat brain
细胞定位	Secreted
纯化	Affinity purification

## 抗原信息

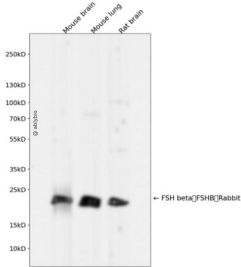
抗原信息	Recombinant fusion protein corresponding to Human FSH beta (FSHB) Rabbit mAb.
序列	NSCELTNITIAIEKEECRFCISINTTWCAGYCYTRDLVYKDPARPKIQKTCTFKELVYETVRVPGCAHHADSLYTPVATQCHC GKCDSSTDCTVRGLGPSYCSFGEMKE

## 靶点信息

研究背景	The pituitary glycoprotein hormone family includes follicle-stimulating hormone, luteinizing hormone, chorionic gonadotropin, and thyroid-stimulating hormone. All of these glycoproteins consist of an identical alpha subunit and a hormone-specific beta subunit. This gene encodes the beta subunit of follicle-stimulating hormone. In conjunction with luteinizing hormone, follicle-stimulating hormone induces egg and sperm production. Alternative splicing results in two transcript variants encoding the same protein.
基因ID	2488

基因名	FSHB
Swiss	P01225
别名	FSHB;HH24

### 产品验证



Western blot analysis of FSH beta (FSHB) Rabbit expressed in Mouse brain, Mouse lung, Rat brain using FSH beta (FSHB) Rabbit mAb at 1:1000. Secondary antibody: HRP Goat Anti-Rabbit IgG (H+L) at 1:5000. Lysates/proteins: 30ug per lane. Blocking buffer: 5% non-fat dry milk in TBST. Detect ion: ECL Enhanced Kit. Exposure time: 120s.

### 实验步骤

访问官网浏览详情: [www.ablybio.cn](http://www.ablybio.cn)