

Myosin Light Chain 2 Rabbit mAb

货号: **AYM30660**

产品信息

反应	Human,Mouse,Rat
宿主	Rabbit
克隆性	Monoclonal
预测反应	
应用	WB IHC IP
推荐浓度	WB: 1:500 - 1:2000 IHC: 1:50 - 1:200 IP: 1:20 - 1:50
理论分子量	18kDa
实测分子量	19kDa
形式	Liquid
保存条件	Store at -20°C. Avoid freeze / thaw cycles. Buffer: PBS with 0.75% BSA,50% glycerol,pH7.3.
偶联物	Unconjugated
阳性对照	MCF7,Mouse skeletal muscle
细胞定位	A band,Cytoplasm,myofibril,sarcomere
纯化	Affinity purification

抗原信息

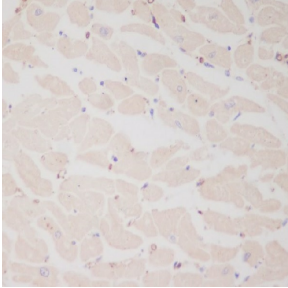
抗原信息	Recombinant fusion protein corresponding to Human Myosin Light Chain 2.
序列	MAPKKAKKRAGGANSNVFSMFEQQTQIQEFKEAFTIMDQNRDGFIDKNDLRDTFAALGRVNVKNEEIDEMIKEAPGPINFTV FLTMFGEKLGADPEETILNAFKVFDPEGKGVLKADYVREMLTTQAERFSKEEVDQMFAAFPPDVTGNLDYKNLVHIITHG EEKD

靶点信息

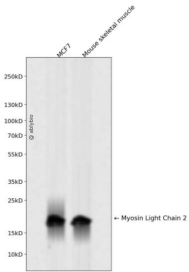
研究背景	Thus gene encodes the regulatory light chain associated with cardiac myosin beta (or slow) heavy chain. Ca ⁺ triggers the phosphorylation of regulatory light chain that in turn triggers contraction. Mutations in t his gene are associated with mid-left ventricular chamber type hypertrophic cardiomyopathy.
基因ID	4633

基因名	MYL2
Swiss	P10916
别名	MYL2;CMH10;MLC-2s/v;MLC2

产品验证



Immunohistochemical analysis of paraffin-embedded human heart, using Myosin Light Chain 2 Antibody.



Western blot analysis of Myosin Light Chain 2 expressed in MCF7, Mouse skeletal muscle using Myosin Light Chain 2 Rabbit mAb at 1:1000. Secondary antibody: HRP Goat Anti-Rabbit IgG (H+L) at 1:5000. Lysates/proteins: 30ug per lane. Blocking buffer: 5% non-fat dry milk in TBST. Detection: ECL Enhanced Kit. Exposure time: 120s.

实验步骤

访问官网浏览详情: www.ablybio.cn