

Alpha1 adaptin Rabbit mAb

货号: **AYM30655**

产品信息

反应	Human,Mouse,Rat
宿主	Rabbit
克隆性	Monoclonal
预测反应	
应用	WB IHC IF/ICC FC
推荐浓度	WB: 1:500 - 1:2000 IHC: 1:50 - 1:200 IF/ICC: 1:50 - 1:200 FC: 1:20 - 1:50
理论分子量	105kDa/107kDa
实测分子量	108kDa
形式	Liquid
保存条件	Store at -20°C. Avoid freeze / thaw cycles. Buffer: PBS with 0.75% BSA,50% glycerol,pH7.3.
偶联物	Unconjugated
阳性对照	THP-1,HeLa,Rat liver,Rat lung
细胞定位	Cell membrane,Cytoplasmic side,Membrane,Peripheral membrane protein,coated pit
纯化	Affinity purification

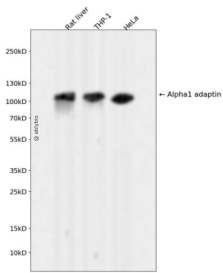
抗原信息

抗原信息	Recombinant fusion protein corresponding to Human Alpha1 adaptin.
序列	MPAVSKGDGMRGLAVFISDIRNCKSKEAEIKRINKELANIRSKFKGDKALDGYSKKKYVCKLLFIFLLGHDIDFGHMEAVNL LSSNKYTEKQIGYLFISVLVNSNSELIRLINNAIKNDLASRNPTFMCLALHCIANVGSREMGEAFAADIPRILVAGDSMDSVK QSAALCLLRLYKASPDLPVPMGEWTARVVHLLNDQHMGVVTAASLITCLCKKNPDDFKTCVSLAVSRLSRIVSSASTDLQ DYTYFVPPAPWLSVK

靶点信息

研究背景	This gene encodes the alpha 1 adaptin subunit of the adaptor protein 2 (AP-2) complex found in clathrin coated vesicles. The AP-2 complex is a heterotetramer consisting of two large adaptins (alpha or beta), a medium adaptin (mu), and a small adaptin (sigma). The complex is part of the protein coat on the cytoplasmic face of coated vesicles which links clathrin to receptors in vesicles. Alternative splicing of this gene results in two transcript variants encoding two different isoforms. A third transcript variant has been described, but its full length nature has not been determined.
基因ID	160
基因名	AP2A1
Swiss	O95782
别名	AP2A1;ADTAA;AP2-ALPHA;CLAPA1

产品验证



Western blot analysis of Alpha1 adaptin expressed in Rat liver, THP-1, HeLa using Alpha1 adaptin Rabbit mAb at 1:1000. Secondary antibody: HRP Goat Anti-Rabbit IgG (H+L) at 1:5000. Lysates/proteins: 30ug per lane. Blocking buffer: 5% non-fat dry milk in TBST. Detection: ECL Enhanced Kit. Exposure time: 120s.

实验步骤

访问官网浏览详情: www.ablybio.cn