

AMBP Rabbit mAb

货号: **AYM30653**

产品信息

反应	Human
宿主	Rabbit
克隆性	Monoclonal
预测反应	
应用	WB IHC
推荐浓度	WB: 1:500 - 1:2000 IHC: 1:50 - 1:200
理论分子量	38kDa
实测分子量	39kDa
形式	Liquid
保存条件	Store at -20°C. Avoid freeze / thaw cycles. Buffer: PBS with 0.75% BSA, 50% glycerol, pH7.3.
偶联物	Unconjugated
阳性对照	Mouse pancreas
细胞定位	Secreted
纯化	Affinity purification

抗原信息

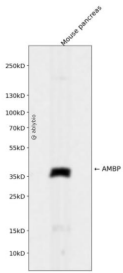
抗原信息	Recombinant fusion protein corresponding to Human AMBP.
序列	GPVPTPPDNIQVQENFNISRIYGKWYNLAIGSTCPWLKKIMDRMTVSTLVLGEGATEAEISMTSTRWRKGVCEETSGAYEK TDTDGKFLYHKSKNITMESYVVHTNYDEYAIFLTKKFSRHHGPTITAKLYGRAPQLRETLQDFRVVAQGVGIPEDSIFTM ADRGECVPGEQEPELIPR

靶点信息

研究背景	This gene encodes a complex glycoprotein secreted in plasma. The precursor is proteolytically processed into distinct functioning proteins: alpha-1-microglobulin, which belongs to the superfamily of lipocalin transport proteins and may play a role in the regulation of inflammatory processes, and bikunin, which is a urinary trypsin inhibitor belonging to the superfamily of Kunitz-type protease inhibitors and plays an important role in many physiological and pathological processes. This gene is located on chromosome 9 in a cluster of lipocalin genes.
------	--

基因ID	259
基因名	AMBP
Swiss	P02760
别名	AMBP;A1M;EDC1;HCP;HI30;IATIL;ITI;ITIL;ITILC;UTI

产品验证



Western blot analysis of AMBP expressed in Mouse pancreas using AMBP Rabbit mAb at 1:1000. Secondary antibody: HRP Goat Anti-Rabbit IgG (H+L) at 1:5000. Lysates/proteins: 30ug per lane. Blocking buffer: 5 % non-fat dry milk in TBST. Detection: ECL Enhanced Kit. Exposure time: 120s.

实验步骤

访问官网浏览详情: www.ablybio.cn