

# CEA(CD66e) Rabbit mAb

货号: **AYM30652**

## 产品信息

反应	Human
宿主	Rabbit
克隆性	Monoclonal
预测反应	
应用	WB IHC IF/ICC
推荐浓度	<b>WB:</b> 1:500 - 1:2000 <b>IHC:</b> 1:50 - 1:200 <b>IF/ICC:</b> 1:50 - 1:200
理论分子量	76kDa
实测分子量	180-220kDa
形式	Liquid
保存条件	Store at -20°C. Avoid freeze / thaw cycles. Buffer: PBS with 0.75% BSA,50% glycerol,pH7.3.
偶联物	Unconjugated
阳性对照	HeLa,Mouse pancreas
细胞定位	Cell membrane,GPI-anchor,Lipid-anchor
纯化	Affinity purification

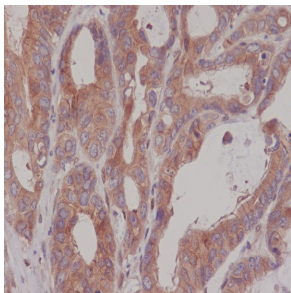
## 抗原信息

抗原信息	Recombinant fusion protein corresponding to Human CEA(CD66e).
序列	MESPSAPPHRWCI PWQRLLLTASLLTFWNPPTAKLTIESTPFNVAEGKEVLLL VHNL PQHLFGYSWYKGERVDG NRQIIIGY VIGTQQATPGPAYSGREIIPNASLLIQNIIQNDTGFYTLHVIKSDLVNEEATGQFRVYPELPKPSISSNNSKPVEDKDAVAFT CEPETQDATYLWVNNQSLPVS PRLQLSNGNRTLTFNVTRNDTASYKCETQNPVSARRSDSVILNVLYGPDAPTISPLNT SYRSGENLNLSCHAASNPPAQYSW FVNGTFQQSTQELFIPNITVNNSGSYTCQAHNSDTGLNRRTVTITVYAEPPKPFITS NNSNPVEDEDAVALTCEPEIQNTTYLWVNNQSLPVS PRLQLSNDNRTLTLSSVTRNDVGPYECGIQNELSVDHSDPVILN VLYGPDPTISPSYTYRPGVNL SLSCHAASNPPAQYSWLIDGNIQHTQELFISNITEKNSGLYTCQANNSASGHSRTTVK TITVSAELPKPSISSNNSKPVEDKDAVAFTCEPEAQNTTYLWVNGQSLPVS PRLQLSNGNRTLTFNVTRNDARAYVCGI QNSVSANRSDPVTL DVLYGPDTPHSPDSSYLSGANLNLSCHSASNPSQYSWRINGIPQQHTQVLFIAKITPNNGTYAC FVSNLATGRNNSIVKSITVSASGTSPGLSAGATVGIMIGVLVGVALI

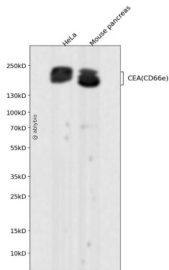
## 靶点信息

研究背景	This gene encodes a cell surface glycoprotein that represents the founding member of the carcinoembryonic antigen (CEA) family of proteins. The encoded protein is used as a clinical biomarker for gastrointestinal cancers and may promote tumor development through its role as a cell adhesion molecule. Additionally, the encoded protein may regulate differentiation, apoptosis, and cell polarity. This gene is present in a CEA family gene cluster on chromosome 19. Alternative splicing results in multiple transcript variants.
基因ID	1048
基因名	CEACAM5
Swiss	P06731
别名	CEACAM5;CD66e;CEA

## 产品验证



Immunohistochemical analysis of paraffin-embedded human colon carcinoma, using CEA(CD66e) Antibody.



Western blot analysis of CEA(CD66e) expressed in HeLa, Mouse pancreas using CEA(CD66e) Rabbit mAb at 1:1000. Secondary antibody: HRP Goat Anti-Rabbit IgG (H+L) at 1:5000. Lysates/proteins: 30ug per lane. Blocking buffer: 5% non-fat dry milk in TBST. Detection: ECL Enhanced Kit. Exposure time: 120s.

## 实验步骤

访问官网浏览详情: [www.ablybio.cn](http://www.ablybio.cn)