

— ABLYBIO, Help Your Research



KDM1/LSD1 Rabbit mAb

货号: **AYM30647**

产品信息

反应	Human,Mouse,Rat
宿主	Rabbit
克隆性	Monoclonal
预测反应	
应用	WB IHC IF/ICC IP
推荐浓度	WB: 1:500 - 1:2000 IHC: 1:50 - 1:200 IF/ICC: 1:50 - 1:200 IP: 1:20 - 1:50
理论分子量	92kDa/95kDa
实测分子量	92kDa
形式	Liquid
保存条件	Store at -20°C. Avoid freeze / thaw cycles. Buffer: PBS with 0.75% BSA,50% glycerol,pH7.3.
偶联物	Unconjugated
阳性对照	U-87MG,HeLa,Jurkat,Mouse liver,293T
细胞定位	Nucleus
纯化	Affinity purification

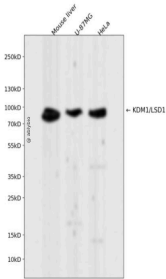
抗原信息

抗原信息	Recombinant fusion protein corresponding to Human KDM1/LSD1.
------	--

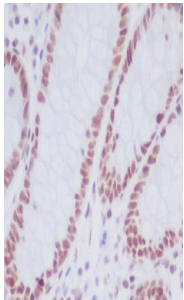
靶点信息

研究背景	This gene encodes a nuclear protein containing a SWIRM domain, a FAD-binding motif, and an amine oxidase domain. This protein is a component of several histone deacetylase complexes, though it silences genes by functioning as a histone demethylase. Alternative splicing results in multiple transcript variants.
基因ID	23028
基因名	KDM1A
Swiss	O60341
别名	KDM1/LSD1,KDM1/LSD1 Rabbit mAb,KDM1A,BRAF35-HDAC complex protein BHC110,Flavin-containing amine oxidase domain-containing protein 2,[histone H3]-dimethyl-L-lysine(4) FAD-dependent demethylase 1 A,AOF2,BHC110,KDM1,KIAA0601

产品验证



Western blot analysis of KDM1/LSD1 expressed in Mouse liver,U-87MG,HeLa using KDM1/LSD1 Rabbit mAb at 1:1000. Secondary antibody: HRP Goat Anti-Rabbit IgG (H+L) at 1:5000. Lysates/proteins: 30ug per lane. Blocking buffer: 5% non-fat dry milk in TBST. Detection: ECL Enhanced Kit. Exposure time: 120s.



Immunohistochemical analysis of paraffin-embedded human colon, using KDM1/LSD1 Antibody.

实验步骤

访问官网浏览详情: www.ablybio.cn (<https://www.ablybio.cn/>www.ablybio.cn)