

IKBKE Rabbit mAb

货号: **AYM30645**

产品信息

反应	Human
宿主	Rabbit
克隆性	Monoclonal
预测反应	
应用	WB IHC IF/ICC FC
推荐浓度	WB: 1:500 - 1:2000 IHC: 1:50 - 1:200 IF/ICC: 1:50 - 1:200 FC: 1:20 - 1:50
理论分子量	70kDa/80kDa
实测分子量	80kDa
形式	Liquid
保存条件	Store at -20°C. Avoid freeze / thaw cycles. Buffer: PBS with 0.75% BSA,50% glycerol,pH7.3.
偶联物	Unconjugated
阳性对照	SW480,DU145,MCF7,Mouse liver
细胞定位	Cytoplasm,Nucleus,PML body
纯化	Affinity purification

抗原信息

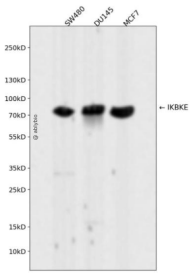
抗原信息	Recombinant fusion protein corresponding to Human IKBKE.
序列	SRLRTLAEVLSRCSQNITETQESLSSLNRELVKSRDQVHEDRSIQQIQCCLDKMNFIYKQFKKSRMRPGLGYNEEQIHKLDK VNFSLAKRLLQVFQEECVQKYQASLVTHGKRMVHVHETRNHLRLVGCSSAACNTEAQGVQESLSKLEELSHQLLQDRA KGAQASPPPIAPYSPTRKDLLLHMQELCEGMKLLASDLLDNNRIIERLNRVPAPPDV

靶点信息

研究背景	IKBKE is a noncanonical I-kappa-B (see MIM 164008) kinase (IKK) that is essential for regulating antiviral signaling pathways. IKBKE has also been identified as a breast cancer (MIM 114480) oncogene and is amplified and overexpressed in over 30% of breast carcinomas and breast cancer cell lines (Hutti et al., 2009 [PubMed 19481526]).[supplied by OMIM, Oct 2009]
------	---

基因ID	9641
基因名	IKBKE
Swiss	Q14164
别名	IKBKE;IKK-E;IKK-i;IKKE;IKKI

产品验证



Western blot analysis of IKBKE expressed in SW480,DU145,MCF7 using IKBKE Rabbit mAb at 1:1000. Secondary antibody: HRP Goat Anti-Rabbit IgG (H+L) at 1:5000. Lysates/proteins: 30ug per lane. Blocking buffer: 5% non-fat dry milk in TBST. Detection: ECL Enhanced Kit. Exposure time: 120s.

实验步骤

访问官网浏览详情: www.ablybio.cn