

KAT9 / Elp3 Rabbit mAb

货号: **AYM30639**

产品信息

反应	Human,Mouse,Rat
宿主	Rabbit
克隆性	Monoclonal
预测反应	
应用	WB IF/ICC IP
推荐浓度	WB: 1:500 - 1:2000 IF/ICC: 1:50 - 1:200 IP: 1:20 - 1:50
理论分子量	49kDa/52kDa/60kDa/62kDa
实测分子量	62kDa
形式	Liquid
保存条件	Store at -20°C. Avoid freeze / thaw cycles. Buffer: PBS with 0.75% BSA,50% glycerol,pH7.3.
偶联物	Unconjugated
阳性对照	Mouse kidney
细胞定位	Cytoplasm,Nucleus
纯化	Affinity purification

抗原信息

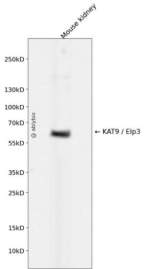
抗原信息	Recombinant fusion protein corresponding to Human KAT9 / Elp3.
序列	MRQKRKGDLSPAELMMLTIGDVIKQLIEAHEQGKDIDLNKVKTKTAAKYGLSAQPRLVDIIAAVPPQYRKVLMPKLKAKPIRT ASGIAVVAVMCKPHRCPHISFTGNICVYCPGGPDSDFEYSTQSYTGYEPTSMRAIRARYDPFLQTRHRIEQLKQLGHSVDK VEFIVMGGTFMALPEEYRDYFIRNLHDALSGHTSNN

靶点信息

研究背景	ELP3 is the catalytic subunit of the histone acetyltransferase elongator complex, which contributes to transcript elongation and also regulates the maturation of projection neurons (Creppe et al., 2009 [PubMed 19185337]).[supplied by OMIM, Apr 2009]
基因ID	55140

基因名	ELP3
Swiss	Q9H9T3
别名	ELP3;KAT9

产品验证



Western blot analysis of KAT9 / Elp3 expressed in Mouse kidney using KAT9 / Elp3 Rabbit mAb at 1:1000. Secondary antibody: HRP Goat Anti-Rabbit IgG (H+L) at 1:5000. Lysates/proteins: 30ug per lane. Blocking buffer: 5% non-fat dry milk in TBST. Detection: ECL Enhanced Kit. Exposure time: 120s.

实验步骤

访问官网浏览详情: www.ablybio.cn