

Reelin Rabbit mAb

货号: **AYM30621**

产品信息

反应	Human,Rat
宿主	Rabbit
克隆性	Monoclonal
预测反应	
应用	WB
推荐浓度	WB: 1:500 - 1:2000
理论分子量	
实测分子量	388kDa
形式	Liquid
保存条件	Store at -20°C. Avoid freeze / thaw cycles. Buffer: PBS with 0.75% BSA,50% glycerol,pH7.3.
偶联物	Unconjugated
阳性对照	U-87MG,C6,LO2,HepG2
细胞定位	cytoplasm,dendrite,extracellular region,extracellular space,neuron projection,plasma membrane,reelin complex
纯化	Affinity purification

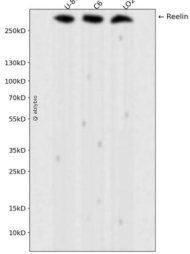
抗原信息

抗原信息	Recombinant fusion protein corresponding to Human Reelin.
序列	KISTKNPDFLKDDFEGQLESDRFLMSGGKPSRKCGILSSGNNLFFNEDGLRMLMTRDLDSLHARFVQFFMRLGCGKGV PDPRSQPVLLQYSLNGGLSWSLLQEFLFSNSSNVGRYIALEIPLKARSGSTRLRWWQPSENGHFYSPWVIDQILIGGNISG N

靶点信息

研究背景	This gene encodes a large secreted extracellular matrix protein thought to control cell-cell interactions critical for cell positioning and neuronal migration during brain development. This protein may be involved in schizophrenia, autism, bipolar disorder, major depression and in migration defects associated with temporal lobe epilepsy. Mutations of this gene are associated with autosomal recessive lissencephaly with cerebellar hypoplasia. Two transcript variants encoding distinct isoforms have been identified for this gene. Other transcript variants have been described but their full length nature has not been determined. [provided by RefSeq, Jul 2008]
基因ID	5649
基因名	RELN
Swiss	P78509
别名	ETL7;LIS2;PRO1598;RL;RELN

产品验证



Western blot analysis of Reelin expressed in U-87MG,C6,LO2 using Reelin Rabbit mAb at 1:1000. Secondary antibody: HRP Goat Anti-Rabbit IgG (H+L) at 1:5000. Lysates/proteins: 30ug per lane. Blocking buffer: 5% non-fat dry milk in TBST. Detection: ECL Enhanced Kit. Exposure time: 120s.

实验步骤

访问官网浏览详情: www.ablybio.cn