

# ADAM15 Rabbit mAb

货号: **AYM30620**

## 产品信息

反应	Human
宿主	Rabbit
克隆性	Monoclonal
预测反应	
应用	WB IHC
推荐浓度	<b>WB:</b> 1:500 - 1:2000 <b>IHC:</b> 1:50 - 1:200
理论分子量	90,100kDa
实测分子量	90,100kDa
形式	Liquid
保存条件	Store at -20°C. Avoid freeze / thaw cycles. Buffer: PBS with 0.75% BSA,50% glycerol,pH7.3.
偶联物	Unconjugated
阳性对照	HCT116
细胞定位	Cell junction,Cell projection,Cytoplasmic vesicle,Endomembrane system,Single-pass type I membrane protein,acrosome,adherens junction,cilium,flagellum,secretory vesicle
纯化	Affinity purification

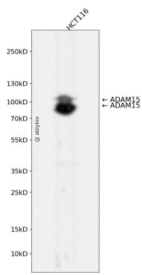
## 抗原信息

抗原信息	Recombinant fusion protein corresponding to Human ADAM15.
序列	RHIRRRRDVVTETKTVELVIVADHSEAQKYRDFQHLLNRTLEVALLLDTFFRPLNVRVALVGLEAWTQRDLVEISPNPAVTLE NFLHWRRRAHLLPRLPHDS

## 靶点信息

研究背景	The protein encoded by this gene is a member of the ADAM (a disintegrin and metalloproteinase) protein family. ADAM family members are type I transmembrane glycoproteins known to be involved in cell adhesion and proteolytic ectodomain processing of cytokines and adhesion molecules. This protein contains multiple functional domains including a zinc-binding metalloprotease domain, a disintegrin-like domain, as well as a EGF-like domain. Through its disintegrin-like domain, this protein specifically interacts with the integrin beta chain, beta 3. It also interacts with Src family protein-tyrosine kinases in a phosphorylation-dependent manner, suggesting that this protein may function in cell-cell adhesion as well as in cellular signaling. Multiple alternatively spliced transcript variants encoding distinct isoforms have been observed. [provided by RefSeq, Jul 2008]
基因ID	8751
基因名	ADAM15
Swiss	Q13444
别名	MDC15

## 产品验证



Western blot analysis of ADAM15 expressed in HCT116 using ADAM15 Rabbit mAb at 1:1000. Secondary antibody: HRP Goat Anti-Rabbit IgG (H+L) at 1:5000. Lysates/proteins: 30ug per lane. Blocking buffer: 5% non-fat dry milk in TBST. Detection: ECL Enhanced Kit. Exposure time: 120s.

## 实验步骤

访问官网浏览详情: [www.ablybio.cn](http://www.ablybio.cn)