

# PLGF Rabbit mAb

货号: **AYM30616**

## 产品信息

反应	Human
宿主	Rabbit
克隆性	Monoclonal
预测反应	
应用	WB IP
推荐浓度	<b>WB:</b> 1:500 - 1:2000 <b>IP:</b> 1:20 - 1:50
理论分子量	16kDa/19kDa/24kDa/27kDa
实测分子量	25kDa
形式	Liquid
保存条件	Store at -20°C. Avoid freeze / thaw cycles. Buffer: PBS with 0.75% BSA,50% glycerol,pH7.3.
偶联物	Unconjugated
阳性对照	293T,Mouse brain,Mouse liver,HT-29,MCF7,Rat brain
细胞定位	Secreted
纯化	Affinity purification

## 抗原信息

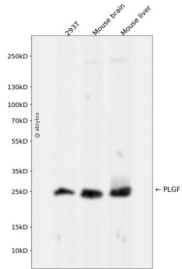
抗原信息	Recombinant fusion protein corresponding to Human PLGF.
序列	LPAVPPQQWALSAGNGSSEVEVVPFQEVWGRSYCRALERLVDVVSEYPSEVEHMFSPSCVSLLRCTGCCGDENLHCVPV ETANVTMQLLKIRSGDRPSYVELTFSQHVRCECRPLREKMKPERRRRPKGRGKRRREKQRPTDCHLCGDAVPRR

## 靶点信息

研究背景	This gene encodes a growth factor found in placenta which is homologous to vascular endothelial growth factor. Alternatively spliced transcripts encoding different isoforms have been found for this gene.
基因ID	5228
基因名	PGF

Swiss	P49763
别名	PGF;D12S1900;PGFL;PIGF;PLGF;PIGF-2;SHGC-10760

## 产品验证



Western blot analysis of PLGF expressed in 293T, Mouse brain, Mouse liver using PLGF Rabbit mAb at 1:1 000. Secondary antibody: HRP Goat Anti-Rabbit IgG (H+L) at 1:5000. Lysates/proteins: 30ug per lane. B locking buffer: 5% non-fat dry milk in TBST. Detection: ECL Enhanced Kit. Exposure time: 120s.

## 实验步骤

访问官网浏览详情: [www.ablybio.cn](http://www.ablybio.cn)