

# APE1 Rabbit mAb

货号: **AYM30611**

## 产品信息

反应	Human,Mouse,Rat
宿主	Rabbit
克隆性	Monoclonal
预测反应	
应用	WB IHC
推荐浓度	<b>WB:</b> 1:500 - 1:2000 <b>IHC:</b> 1:50 - 1:200
理论分子量	36kDa
实测分子量	36kDa
形式	Liquid
保存条件	Store at -20°C. Avoid freeze / thaw cycles. Buffer: PBS with 0.75% BSA,50% glycerol,pH7.3.
偶联物	Unconjugated
阳性对照	HeLa,293T,A-431,NIH/3T3,Mouse brain,Rat testis
细胞定位	Cytoplasm,Endoplasmic reticulum,Mitochondrion,Nucleus,Nucleus speckle,nucleolus
纯化	Affinity purification

## 抗原信息

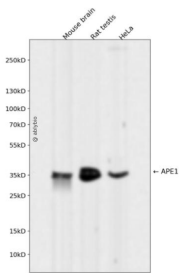
抗原信息	Recombinant fusion protein corresponding to Human APE1.
序列	MPKRGKKGAVAEDGDDELRTPEAKKSKTAAKNDKEAAGEGPALYEDPPDQKTSPSGKPATLKICSWNV DGLRAWIKKK GLDWVKEEAPDILCLQETKCS

## 靶点信息

研究背景	Apurinic/aprimidinic (AP) sites occur frequently in DNA molecules by spontaneous hydrolysis, by DNA damaging agents or by DNA glycosylases that remove specific abnormal bases. AP sites are pre-mutagenic lesions that can prevent normal DNA replication so the cell contains systems to identify and repair such sites. Class II AP endonucleases cleave the phosphodiester backbone 5' to the AP site. This gene encodes the major AP endonuclease in human cells. Splice variants have been found for this gene; all encode the same protein. [provided by RefSeq, Jul 2008]
------	---

基因ID	328
基因名	APEX1
Swiss	P27695
别名	APE; APE1; APEN; APEX; APX; HAP1; REF1

## 产品验证



Western blot analysis of APE1 expressed in Mouse brain, Rat testis, HeLa using APE1 Rabbit mAb at 1:1000. Secondary antibody: HRP Goat Anti-Rabbit IgG (H+L) at 1:5000. Lysates/proteins: 30ug per lane. Blocking buffer: 5% non-fat dry milk in TBST. Detection: ECL Enhanced Kit. Exposure time: 120s.

## 实验步骤

访问官网浏览详情: [www.ablybio.cn](http://www.ablybio.cn)