

SLC22A1 Rabbit mAb

货号: **AYM30602**

产品信息

反应	Human
宿主	Rabbit
克隆性	Monoclonal
预测反应	
应用	WB FC
推荐浓度	WB: 1:500 - 1:2000 FC: 1:20 - 1:50
理论分子量	39kDa/53kDa/56kDa/61kDa
实测分子量	72kDa
形式	Liquid
保存条件	Store at -20°C. Avoid freeze / thaw cycles. Buffer: PBS with 0.75% BSA,50% glycerol,pH7.3.
偶联物	Unconjugated
阳性对照	LO2,293T,HT-29,Mouse liver
细胞定位	Basolateral cell membrane,Multi-pass membrane protein
纯化	Affinity purification

抗原信息

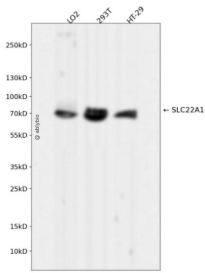
抗原信息	Recombinant fusion protein corresponding to Human SLC22A1.
序列	GFTPDHHCQSPGVAELSQRCGWSPAELNYTVPGLGPAGEAFLGQCRRYEVDWNQSALSCVDPLASLATNRSHLPLGPC QDGWVYDTPGSSIVTEFNLVCADSWKLD

靶点信息

研究背景	Polyspecific organic cation transporters in the liver, kidney, intestine, and other organs are critical for elimination of many endogenous small organic cations as well as a wide array of drugs and environmental toxins. This gene is one of three similar cation transporter genes located in a cluster on chromosome 6. The encoded protein contains twelve putative transmembrane domains and is a plasma integral membrane protein. Two transcript variants encoding two different isoforms have been found for this gene, but only the longer variant encodes a functional transporter.
------	---

基因ID	6580
基因名	SLC22A1
Swiss	O15245
别名	SLC22A1;HOCT1;OCT1;oct1_cds

产品验证



Western blot analysis of SLC22A1 expressed in LO2,293T,HT-29 using SLC22A1 Rabbit mAb at 1:1000 . Secondary antibody: HRP Goat Anti-Rabbit IgG (H+L) at 1:5000. Lysates/proteins: 30ug per lane. Blo cking buffer: 5% non-fat dry milk in TBST. Detection: ECL Enhanced Kit. Exposure time: 120s.

实验步骤

访问官网浏览详情: www.ablybio.cn