

CPT2 Rabbit mAb

货号: **AYM30601**

产品信息

反应	Human,Mouse,Rat
宿主	Rabbit
克隆性	Monoclonal
预测反应	
应用	WB IHC IF/ICC
推荐浓度	WB: 1:500 - 1:2000 IHC: 1:50 - 1:200 IF/ICC: 1:50 - 1:200
理论分子量	73kDa
实测分子量	74kDa
形式	Liquid
保存条件	Store at -20°C. Avoid freeze / thaw cycles. Buffer: PBS with 0.75% BSA,50% glycerol,pH7.3.
偶联物	Unconjugated
阳性对照	HeLa,293T,HepG2,Mouse liver,Rat liver
细胞定位	Matrix side,Mitochondrion inner membrane,Peripheral membrane protein
纯化	Affinity purification

抗原信息

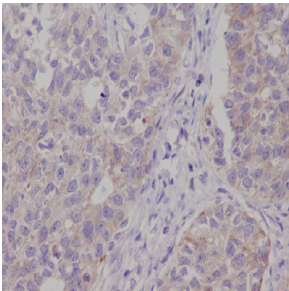
抗原信息	Recombinant fusion protein corresponding to Human CPT2.
序列	ATTDSTVTVQKLNFEITDALKTGITAAKEKFDATMKTLTIDCVQFQRRGGKEFLKQKLSPPDAVAQLAFQMAFLRQYGQTV ATYESCSTAAFKHGRTETIRPASVYTKRCSEAFVREPSRHSAGELQQMMVECSKYHGQLTKEAAMGQGFDRHLFALRH AAKGIIPELYLDPAYGQINHNVLSTLSSPAVNLGGFAPVSDGFGVGYAVHDNHWIGCNVSSYPGRNAREFLQCVEKAL EDMFDALLEGKSIKS

靶点信息

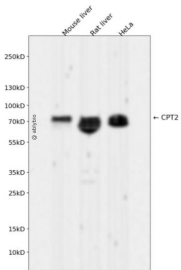
研究背景	The protein encoded by this gene is a nuclear protein which is transported to the mitochondrial inner membrane. Together with carnitine palmitoyltransferase I, the encoded protein oxidizes long-chain fatty acids in the mitochondria. Defects in this gene are associated with mitochondrial long-chain fatty-acid (LCFA) oxidation disorders.
------	---

基因ID	1376
基因名	CPT2
Swiss	P23786
别名	CPT2;CPT1;CPTASE;IIAE4

产品验证



Immunohistochemical analysis of paraffin-embedded human ovarian cancer, using CPT2 Antibody.



Western blot analysis of CPT2 expressed in Mouse liver, Rat liver, HeLa using CPT2 Rabbit mAb at 1:1000. Secondary antibody: HRP Goat Anti-Rabbit IgG (H+L) at 1:5000. Lysates/proteins: 30ug per lane. Blocking buffer: 5% non-fat dry milk in TBST. Detection: ECL Enhanced Kit. Exposure time: 120s.

实验步骤

访问官网浏览详情: www.ablybio.cn