

RRM1 Rabbit mAb

货号: **AYM30592**

产品信息

反应	Human,Mouse,Rat
宿主	Rabbit
克隆性	Monoclonal
预测反应	
应用	WB IHC IF/ICC IP FC
推荐浓度	WB: 1:500 - 1:2000 IHC: 1:50 - 1:200 IF/ICC: 1:50 - 1:200 IP: 1:20 - 1:50 FC: 1:20 - 1:50
理论分子量	90kDa
实测分子量	90kDa
形式	Liquid
保存条件	Store at -20°C. Avoid freeze / thaw cycles. Buffer: PBS with 0.75% BSA,50% glycerol,pH7.3.
偶联物	Unconjugated
阳性对照	HeLa,A-549,Raji,Mouse testis,Rat lung
细胞定位	Cytoplasm
纯化	Affinity purification

抗原信息

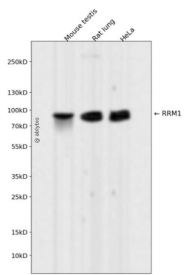
抗原信息	Recombinant fusion protein corresponding to Human RRM1.
序列	IRNSLLIAPMPTASTAQILGNNEIEPYTSNIYTRRVLSGEFQIVNPHLLKDLTERGLWHEEMKNQIIACNGSIQSIPEIPDDLK QLYKTVWEISQKTVLKMAAERGAFIDQSQSLNIHIAEPNYGKLTSMHFYGWKQGLKTGMYYLRTRPAANPIQFTLNKEKLK DKEKVSKEEEEKERNTAAMVCSLENRDECLMCGS

靶点信息

研究背景	This gene encodes the large and catalytic subunit of ribonucleotide reductase, an enzyme essential for the conversion of ribonucleotides into deoxyribonucleotides. A pool of available deoxyribonucleotides is important for DNA replication during S phase of the cell cycle as well as multiple DNA repair processes. Alternative splicing results in multiple transcript variants.
------	--

基因ID	6240
基因名	RRM1
Swiss	P23921
别名	RRM1;R1;RIR1;RR1

产品验证



Western blot analysis of RRM1 expressed in Mouse testis, Rat lung, HeLa using RRM1 Rabbit mAb at 1:1000. Secondary antibody: HRP Goat Anti-Rabbit IgG (H+L) at 1:5000. Lysates/proteins: 30ug per lane. Blocking buffer: 5% non-fat dry milk in TBST. Detection: ECL Enhanced Kit. Exposure time: 120s.

实验步骤

访问官网浏览详情: www.ablybio.cn