

Protein Kinase D2 Rabbit mAb

货号: **AYM30578**

产品信息

反应	Human,Mouse
宿主	Rabbit
克隆性	Monoclonal
预测反应	
应用	WB IHC IF/ICC FC
推荐浓度	WB: 1:500 - 1:2000 IHC: 1:50 - 1:200 IF/ICC: 1:50 - 1:200 FC: 1:20 - 1:50
理论分子量	80kDa/96kDa
实测分子量	105kDa
形式	Liquid
保存条件	Store at -20°C. Avoid freeze / thaw cycles. Buffer: PBS with 0.75% BSA,50% glycerol,pH7.3.
偶联物	Unconjugated
阳性对照	Raji,U-87MG,HeLa,MCF7,Mouse brain,Rat brain
细胞定位	cytoplasm,cytosol,Golgi apparatus,nucleoplasm,nucleus,plasma membrane
纯化	Affinity purification

抗原信息

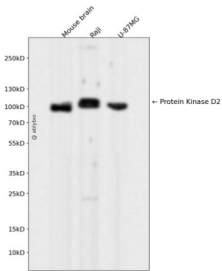
抗原信息	Recombinant fusion protein corresponding to Human Protein Kinase D2.
序列	ESAAQNFSLVPPGTNPHCFEIVTANATYFVGEMPGGTPGGPSGQGAEEAARGWETAIRQALMPVILQDAPSAPGHAPHRQA SLSISVSNSQIQENVDIATVYQ

靶点信息

研究背景	The protein encoded by this gene belongs to the protein kinase D (PKD) family of serine/threonine protein kinases. This kinase can be activated by phorbol esters as well as by gastrin via the cholecystokinin B receptor (CCKBR) in gastric cancer cells. It can bind to diacylglycerol (DAG) in the trans-Golgi network (TGN) and may regulate basolateral membrane protein exit from TGN. Alternative splicing results in multiple transcript variants encoding different isoforms. [provided by RefSeq, Jul 2008]
------	--

基因ID	25865
基因名	PRKD2
Swiss	Q9BZL6
别名	HSPC187;PKD2;nPKC-D2;PRKD2

产品验证



Western blot analysis of Protein Kinase D2 expressed in Mouse brain, Raji, U-87MG using Protein Kinase D2 Rabbit mAb at 1:1000. Secondary antibody: HRP Goat Anti-Rabbit IgG (H+L) at 1:5000. Lysates/proteins: 30ug per lane. Blocking buffer: 5% non-fat dry milk in TBST. Detection: ECL Enhanced Kit. Exposure time: 120s.

实验步骤

访问官网浏览详情: www.ablybio.cn