

CEP43 Rabbit mAb

货号: **AYM30574**

产品信息

反应	Human,Mouse,Rat
宿主	Rabbit
克隆性	Monoclonal
预测反应	
应用	WB IF/ICC
推荐浓度	WB: 1:500 - 1:2000 IF/ICC: 1:50 - 1:200
理论分子量	16kDa/40kDa/43kDa
实测分子量	50kDa
形式	Liquid
保存条件	Store at -20°C. Avoid freeze / thaw cycles. Buffer: PBS with 0.75% BSA,50% glycerol,pH7.3.
偶联物	Unconjugated
阳性对照	Mouse kidney,Mouse brain
细胞定位	Cytoplasm,centrosome,cytoskeleton,microtubule organizing center
纯化	Affinity purification

抗原信息

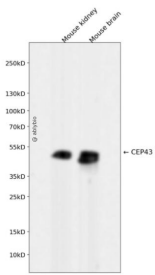
抗原信息	Recombinant fusion protein corresponding to Human CEP43.
序列	MAATAAAVVAEEDTELRDLLVQTLNSGVLNRIKAELRAAVFLALEEQEKVENKTPLVNESLKKFLNTKD

靶点信息

研究背景	This gene encodes a largely hydrophilic centrosomal protein that is required for anchoring microtubules to subcellular structures. A t(6;8)(q27;p11) chromosomal translocation, fusing this gene and the fibroblast growth factor receptor 1 (FGFR1) gene, has been found in cases of myeloproliferative disorder. The resulting chimeric protein contains the N-terminal leucine-rich region of this encoded protein fused to the catalytic domain of FGFR1. Alterations in this gene may also be associated with Crohn's disease, Graves' disease, and vitiligo. Alternatively spliced transcript variants that encode different proteins have been identified. [provided by RefSeq, Jul 2013]
------	--

基因ID	11116
基因名	FGFR10P
Swiss	O95684
别名	FGFR10P;FOP

产品验证



Western blot analysis of CEP43 expressed in Mouse kidney, Mouse brain using CEP43 Rabbit mAb at 1:1000. Secondary antibody: HRP Goat Anti-Rabbit IgG (H+L) at 1:5000. Lysates/proteins: 30ug per lane. Blocking buffer: 5% non-fat dry milk in TBST. Detection: ECL Enhanced Kit. Exposure time: 120s.

实验步骤

访问官网浏览详情: www.ablybio.cn