

# GRSF1 Rabbit mAb

货号: **AYM30573**

## 产品信息

反应	Human
宿主	Rabbit
克隆性	Monoclonal
预测反应	
应用	WB IHC IF/ICC FC
推荐浓度	<b>WB:</b> 1:500 - 1:2000 <b>IHC:</b> 1:50 - 1:200 <b>IF/ICC:</b> 1:50 - 1:200 <b>FC:</b> 1:20 - 1:50
理论分子量	53kDa
实测分子量	53kDa
形式	Liquid
保存条件	Store at -20°C. Avoid freeze / thaw cycles. Buffer: PBS with 0.75% BSA,50% glycerol,pH7.3.
偶联物	Unconjugated
阳性对照	HeLa,mouse kidney
细胞定位	cytoplasm,mitochondrial nucleoid,mitochondrion,nucleoplasm
纯化	Affinity purification

## 抗原信息

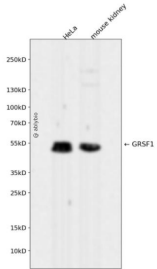
抗原信息	Recombinant fusion protein corresponding to Human GRSF1.
序列	SLLPQSLAAAAAVPTRSYSQESKTTYLEDLPPPEYELAPSKLEEEVDDVFLIRAQGLPWSCTMEDVLNFFSDCRIRNGENGI HFLNDRDGKRRGDALIEI

## 靶点信息

研究背景	The protein encoded by this gene is a cellular protein that binds RNAs containing the G-rich element. The protein is localized in the cytoplasm, and has been shown to stimulate translation of viral mRNAs in vitro. Multiple transcript variants encoding different isoforms have been found for this gene.
基因ID	2926

基因名	GRSF1
Swiss	Q12849
别名	GRSF1

## 产品验证



Western blot analysis of GRSF1 expressed in HeLa, mouse kidney using GRSF1 Rabbit mAb at 1:1000. Secondary antibody: HRP Goat Anti-Rabbit IgG (H+L) at 1:5000. Lysates/proteins: 30ug per lane. Blocking buffer: 5% non-fat dry milk in TBST. Detection: ECL Enhanced Kit. Exposure time: 120s.

## 实验步骤

访问官网浏览详情: [www.ablybio.cn](http://www.ablybio.cn)