

KMT5A / SETD8 Rabbit mAb

货号: **AYM30569**

产品信息

反应	Human,Mouse,Rat
宿主	Rabbit
克隆性	Monoclonal
预测反应	
应用	WB FC
推荐浓度	WB: 1:500 - 1:2000 FC: 1:20 - 1:50
理论分子量	39kDa/42kDa
实测分子量	50kDa
形式	Liquid
保存条件	Store at -20°C. Avoid freeze / thaw cycles. Buffer: PBS with 0.75% BSA,50% glycerol,pH7.3.
偶联物	Unconjugated
阳性对照	A-549,293T,Mouse kidney
细胞定位	Chromosome,Nucleus
纯化	Affinity purification

抗原信息

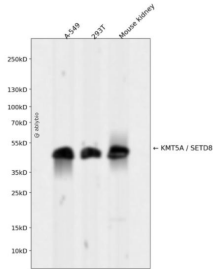
抗原信息	Recombinant fusion protein corresponding to Human KMT5A / SETD8.
序列	ENSVTHHEVKCQGKPLAGIYRKREEKRNAGNAVRSAMKSEEQKIKDARKGPLVPFPNQSEAAEPPKTPPSSCDSTNAAIA KQALKKPIKGGKQAPRKAQGKTQQNRKLTDFYPVRRSSRKSKAELQSEERKRIDELIESGKEEGMKIDLIDGKGRGVIATK QFSRGDFVVEYHGDLIEITDAKKREALYAQDPSTGCYMYFYQLSKTYCVDATRETNRLGRLINHSCGNCQTKLHDIDGV PHLILIASRDIAAGEELLYDYGDRSKASIEAHPWLKH

靶点信息

研究背景	The protein encoded by this gene is a protein-lysine N-methyltransferase that can monomethylate Lys-20 of histone H4 to effect transcriptional repression of some genes. The encoded protein is required for cell proliferation and plays a role in chromatin condensation. [provided by RefSeq, May 2016]
基因ID	387893

基因名	KMT5A
Swiss	Q9NQR1
别名	KMT5A;PR-Set7;SET07;SET8;SETD8

产品验证



Western blot analysis of KMT5A / SETD8 expressed in A-549,293T,Mouse kidney using KMT5A / SETD8 Rabbit mAb at 1:1000. Secondary antibody: HRP Goat Anti-Rabbit IgG (H+L) at 1:5000. Lysates/proteins: 30ug per lane. Blocking buffer: 5% non-fat dry milk in TBST. Detection: ECL Enhanced Kit. Exposure time: 120s.

实验步骤

访问官网浏览详情: www.ablybio.cn