

Phospho-FGFR3 (Y724) Rabbit mAb

货号: AYM30562

产品信息

反应	Human,Mouse
宿主	Rabbit
克隆性	Monoclonal
预测反应	
应用	WB IF/ICC IP FC
推荐浓度	WB: 1:500 - 1:2000 IF/ICC: 1:50 - 1:200 IP: 1:20 - 1:50 FC: 1:20 - 1:50
理论分子量	98kDa
实测分子量	96kDa
形式	Liquid
保存条件	Store at -20°C. Avoid freeze / thaw cycles. Buffer: PBS with 0.75% BSA,50% glycerol,pH7.3.
偶联物	Unconjugated
阳性对照	293T,Mouse brain,Mouse lung,Rat lung,Rat kidney
细胞定位	Cell membrane,Cytoplasmic vesicle,Endoplasmic reticulum,Secreted,Single-pass type I membrane protein
纯化	Affinity purification

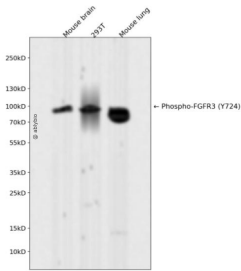
抗原信息

抗原信息	Recombinant fusion protein corresponding to Human Phospho-FGFR3 (Y724).
序列	MGAPACALALCVAVAIVAGASSESLGTEQRVVGRAAEVPGPEPGQEQQLVFGSGDAVELSCPPPGGGPMGPTVWVKDG TGLVPSERVLVGPQRLQLNAS

靶点信息

研究背景	This gene encodes a member of the fibroblast growth factor receptor (FGFR) family, with its amino acid sequence being highly conserved between members and among divergent species. FGFR family members differ from one another in their ligand affinities and tissue distribution. A full-length representative protein would consist of an extracellular region, composed of three immunoglobulin-like domains, a single hydrophobic membrane-spanning segment and a cytoplasmic tyrosine kinase domain. The extracellular portion of the protein interacts with fibroblast growth factors, setting in motion a cascade of downstream signals, ultimately influencing mitogenesis and differentiation. This particular family member binds acidic and basic fibroblast growth hormone and plays a role in bone development and maintenance. Mutations in this gene lead to craniosynostosis and multiple types of skeletal dysplasia. Three alternatively spliced transcript variants that encode different protein isoforms have been described. [provided by RefSeq, Jul 2009]
基因ID	2261
基因名	FGFR3
Swiss	P22607
别名	ACH;CD333;CEK2;HSFGFR3EX;JTK4;FGFR3

产品验证



Western blot analysis of Phospho-FGFR3 (Y724) expressed in Mouse brain, 293T, Mouse lung using Phospho-FGFR3 (Y724) Rabbit mAb at 1:1000. Secondary antibody: HRP Goat Anti-Rabbit IgG (H+L) at 1:5000. Lysates/proteins: 30ug per lane. Blocking buffer: 5% non-fat dry milk in TBST. Detection: ECL Enhanced Kit. Exposure time: 120s.

实验步骤

访问官网浏览详情: www.ablybio.cn