

Cullin 1 Rabbit mAb

货号: **AYM30558**

产品信息

反应	Human,Mouse,Rat
宿主	Rabbit
克隆性	Monoclonal
预测反应	
应用	WB IHC IF/ICC IP FC
推荐浓度	WB: 1:500 - 1:2000 IHC: 1:50 - 1:200 IF/ICC: 1:50 - 1:200 IP: 1:20 - 1:50 FC: 1:20 - 1:50
理论分子量	89kDa
实测分子量	90kDa
形式	Liquid
保存条件	Store at -20°C. Avoid freeze / thaw cycles. Buffer: PBS with 0.75% BSA,50% glycerol,pH7.3.
偶联物	Unconjugated
阳性对照	A-549,MCF7,NIH/3T3,K-562,C6,Mouse liver,Mouse brain,Rat testis
细胞定位	cytosol,nucleoplasm,plasma membrane
纯化	Affinity purification

抗原信息

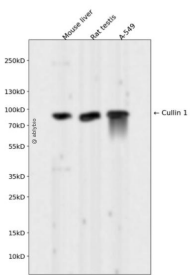
抗原信息	Recombinant fusion protein corresponding to Human Cullin 1.
序列	KNPEEALEDTLNQVMVVKYIEDKDVFKFYAKMLAKRLVHQNSASDDAEASMISLKLKQACGFYTSKLQRMFQDIGVS KDLNEQFKKHLTNSEPLDLDFSIQVLSSGSWPFQSQCTFALPSELSYQRFTAFYASRHSGRKLTWLYQLSKGELVTN

靶点信息

研究背景	The cullin family proteins are scaffold proteins for the Ring finger type E3 ligases. Humans express seven cullin proteins: CUL1-3, CUL4A, CUL4B, CUL5, and CUL7. Each cullin protein can form an E3 ligase similar to the prototype Ring-type E3 ligase Skp1-CUL1-F-box complex. The Cullin-RING-finger type E3 ligases are important regulators in early embryonic development, as highlighted by genetic studies demonstrating that knock-out of CUL1, CUL3, or CUL4A in mice results in early embryonic lethality.
------	--

基因ID	8454
基因名	CUL1
Swiss	Q13616
别名	Cullin 1;CUL1;cullin-1;MGC149834;MGC149835

产品验证



Western blot analysis of Cullin 1 expressed in Mouse liver,Rat testis,A-549 using Cullin 1 Rabbit mAb at 1:1000. Secondary antibody: HRP Goat Anti-Rabbit IgG (H+L) at 1:5000. Lysates/proteins: 30ug per lane. Blocking buffer: 5% non-fat dry milk in TBST. Detection: ECL Enhanced Kit. Exposure time: 120s.

实验步骤

访问官网浏览详情: www.ablybio.cn