

HFE Rabbit mAb

货号: **AYM30557**

产品信息

反应	Human
宿主	Rabbit
克隆性	Monoclonal
预测反应	
应用	WB
推荐浓度	WB: 1:500 - 1:2000
理论分子量	40kDa
实测分子量	40kDa
形式	Liquid
保存条件	Store at -20°C. Avoid freeze / thaw cycles. Buffer: PBS with 0.75% BSA,50% glycerol,pH7.3.
偶联物	Unconjugated
阳性对照	HeLa,HT-29,A-549
细胞定位	Cell membrane,Single-pass type I membrane protein
纯化	Affinity purification

抗原信息

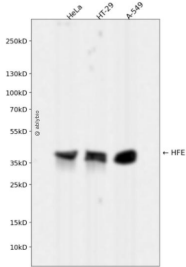
抗原信息	Recombinant fusion protein corresponding to Human HFE.
序列	KEFEPKDVLPNGDGTQGWITLAVPPGEEQRYTCQVEHPGLDQPLIVIWEPSPSGTLVIGVISGIAVFFVILFIGILFIILRKRGSRGAMGHYVLAERE

靶点信息

研究背景	The protein encoded by this gene is a membrane protein that is similar to MHC class I-type proteins and associates with beta2-microglobulin (beta2M). It is thought that this protein functions to regulate iron absorption by regulating the interaction of the transferrin receptor with transferrin. The iron storage disorder, hereditary haemochromatosis, is a recessive genetic disorder that results from defects in this gene. At least nine alternatively spliced variants have been described for this gene. Additional variants have been found but their full-length nature has not been determined.
基因ID	3077

基因名	HFE
Swiss	Q30201
别名	HFE; HFE1; HH; HLA-H; MVCD7; TFQTL2; hemochromatosis

产品验证



Western blot analysis of HFE expressed in HeLa, HT-29, A-549 using HFE Rabbit mAb at 1:1000. Secondary antibody: HRP Goat Anti-Rabbit IgG (H+L) at 1:5000. Lysates/proteins: 30ug per lane. Blocking buffer: 5% non-fat dry milk in TBST. Detection: ECL Enhanced Kit. Exposure time: 120s.

实验步骤

访问官网浏览详情: www.ablybio.cn