

# ATAD2 Rabbit mAb

货号: **AYM30555**

## 产品信息

反应	Human
宿主	Rabbit
克隆性	Monoclonal
预测反应	
应用	WB IF/ICC FC
推荐浓度	<b>WB:</b> 1:500 - 1:2000 <b>IF/ICC:</b> 1:50 - 1:200 <b>FC:</b> 1:20 - 1:50
理论分子量	180kDa
实测分子量	180kDa
形式	Liquid
保存条件	Store at -20°C. Avoid freeze / thaw cycles. Buffer: PBS with 0.75% BSA, 50% glycerol, pH7.3.
偶联物	Unconjugated
阳性对照	MCF7, K-562
细胞定位	extracellular exosome, nucleoplasm, nucleus
纯化	Affinity purification

## 抗原信息

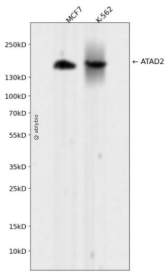
抗原信息	Recombinant fusion protein corresponding to Human ATAD2.
序列	MVVLRSSLELHNHSAASATGSLDLSSDFLSLEHIGRRRLRSAGAAQKKPAATTAKAGDGSSVKEVETYHRTRALRSLRKDAQNSSDSSFENVEITEQLA

## 靶点信息

研究背景	A large family of ATPases has been described, whose key feature is that they share a conserved region of about 220 amino acids that contains an ATP-binding site. The proteins that belong to this family either contain one or two AAA (ATPases Associated with diverse cellular Activities) domains. AAA family proteins often perform chaperone-like functions that assist in the assembly, operation, or disassembly of protein complexes. The protein encoded by this gene contains two AAA domains, as well as a bromodomain. [provided by RefSeq, Jul 2008]
------	--

基因ID	29028
基因名	ATAD2
Swiss	Q6PL18
别名	ANCCA; CT137; PRO2000

## 产品验证



Western blot analysis of ATAD2 expressed in MCF7,K-562 using ATAD2 Rabbit mAb at 1:1000. Secondary antibody: HRP Goat Anti-Rabbit IgG (H+L) at 1:5000. Lysates/proteins: 30ug per lane. Blocking buffer: 5 % non-fat dry milk in TBST. Detection: ECL Enhanced Kit. Exposure time: 120s.

## 实验步骤

访问官网浏览详情: [www.ablybio.cn](http://www.ablybio.cn)